

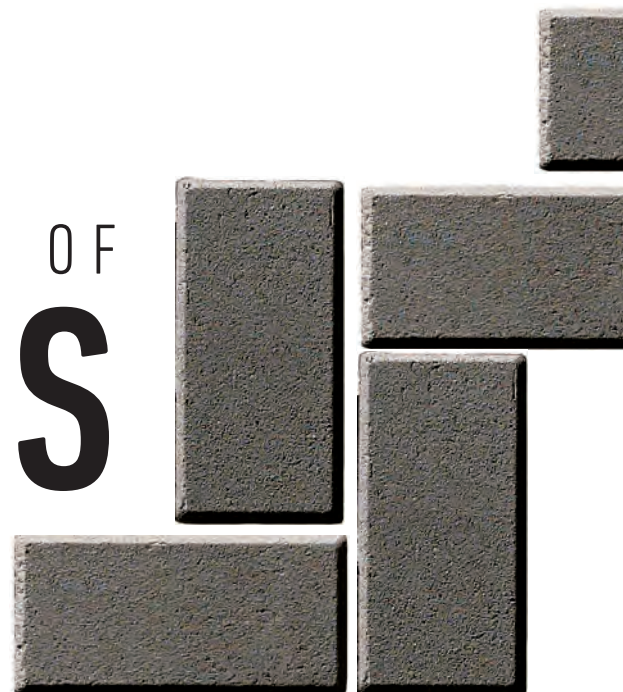









# YOUR JOURNEY STARTS HERE



# TABLE OF CONTENTS



4	Style Guide
18	Inspiration
 36	Pavers & Slabs
 82	Walls
 108	Fire Features
 118	Accessories
 136	Product Specifications



# 72

*Quarziti 2.0  
Porcelain Pavers*

**NOTE:** Belgard® can not guarantee printed color swatches will match actual product. All colors shown are approximate representations of the standard product. Actual colors may vary slightly due to batch variances and environmental conditions at time of photography. Actual sizes may vary by region. Please contact your local Belgard representative for accurate samples, availability and pricing.



62



*Provence Slab*

98



*Ashlar Tandem*

*Holland Stone*

123



*Marina Coping*



# TIMELESS & TRENDING







## THE ESSENCE OF OUTDOOR LIVING.

---

The primary goal in designing an outdoor living room is to create a space that invites you to spend time outdoors. Whether you enjoy entertaining large groups or prefer an intimate space for curling up with a good book, Belgard® is your source for patio designs that bring the outdoors to life.



Follow Belgard on Pinterest at  
[Pinterest.com/Belgard](https://www.pinterest.com/Belgard)

**RANDOM EDGE  
SILHOUETTES ARE  
RETURNING TO FOCUS IN  
CONTEMPORARY WAYS**

*Pictured: Mega-Arbel Patio Slab*



# NATURAL CONNECTION. CONTEMPORARY FOCUS.



**ENTANGLEMENT  
BETWEEN PAVERS  
AND NATURAL  
LANDSCAPES IS A  
GROWING DESIGN TREND.**

*Pictured: Turfstone*



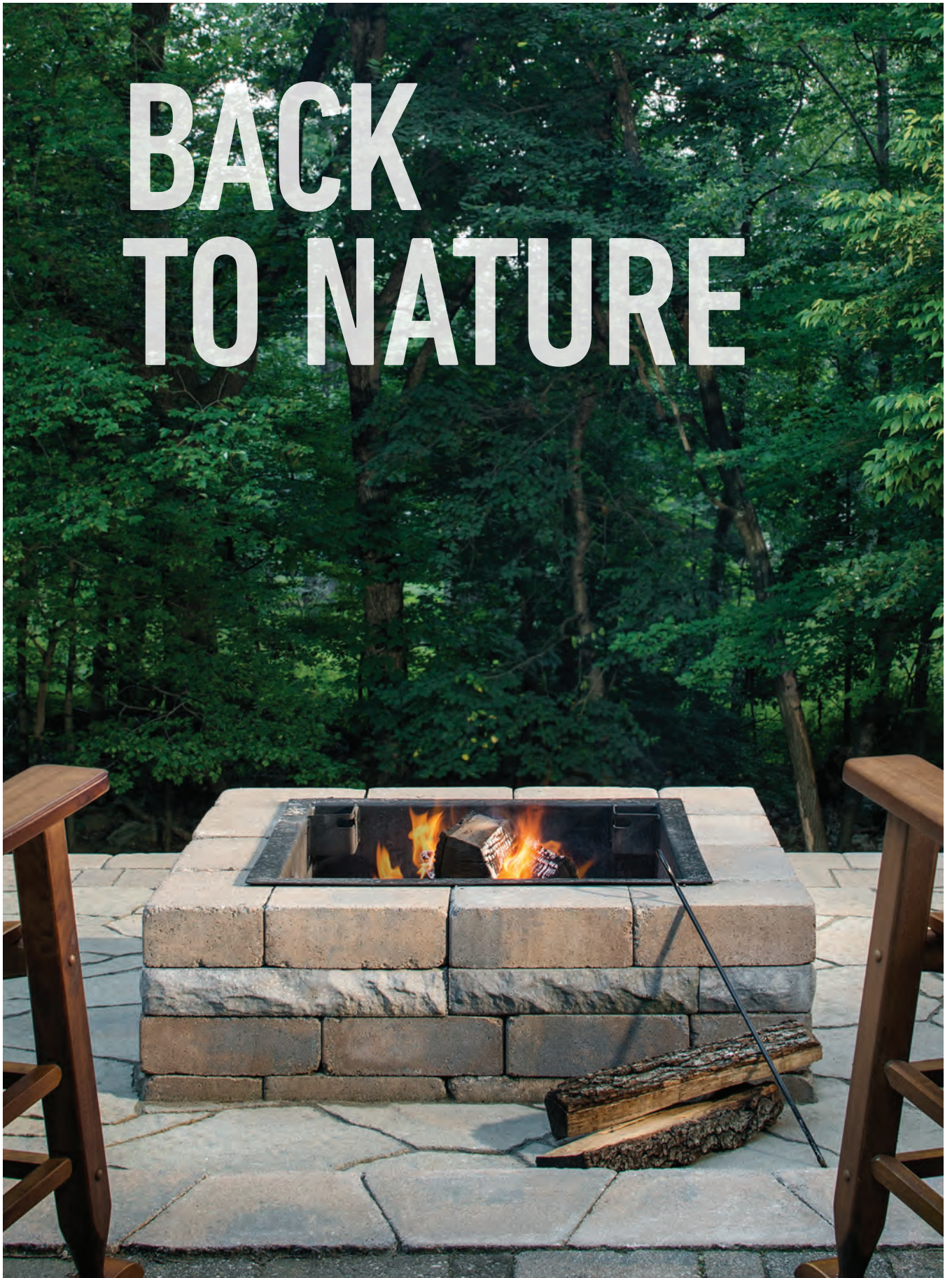
**ESCAPE TO  
THE ELEMENTS**

Current nature-led trends are inspired by blending raw nature and earthen landscapes with the contemporary built environment. This evolution adds a more organic, rugged and imperfect aesthetic.

*Pictured: Custom  
Weston Stone Fire Pit  
Mega-Arbel Patio Slab*



# BACK TO NATURE

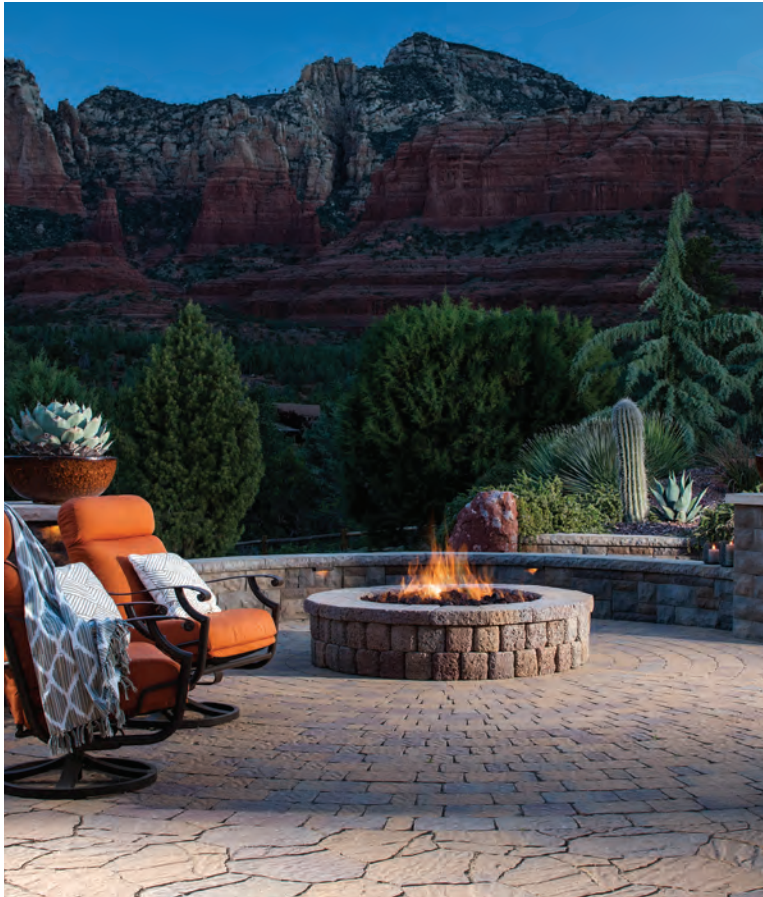




# STYLISH ROOMSCAPES







**DISPLAY YOUR VIEW.  
NO FRAME REQUIRED.**



**STAY INSPIRED.**  
SEE MORE ROOMSCAPES  
@ PINTEREST.COM/BELGARD

## **LIVE WITHOUT BOUNDARIES**

Outdoor settings become rooms without roofs – no longer just dining areas on decks. Create outdoor social spaces to entertain, work, play and relax.



**FINE DINING ONLY A FEW STEPS AWAY**



With dozens of styles, colors, shapes and textures to choose from, Belgard® products help you create outdoor living spaces that become an outward expression of your personal sense of style.

## STYLE MADE SIMPLE

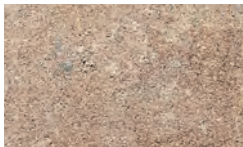
DANVILLE BLEND



AMARETTO



BELLA



FLASH BROWN



SUMMER HILL



LIBERTY

SLATE/RUSTIC



SCULPTED



COBBLED



DIMPLED



SMOOTH/GRANA



# COLORS

SILEX BLEND



SABLE BLEND



CHARCOAL





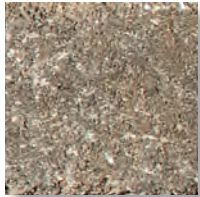
# TEXTURES

TRENDING & TIMELESS TIP

## GO 'GREIGE'

The year's most sought after neutral isn't going out of style any time soon.

Its beauty is in its versatility. The addition of gray to beige creates a richer hue that can work in a cool or warm color scheme, meaning your hardscapes will continue to coordinate with evolving styles.



STANDARD



DISTRESSED



TUMBLED

# SCALE



4" X 8"  
HOLLAND STONE

15 3/8" X 20 1/16"  
MEGA-ARBEL®



12" X 3"  
MODULINE SERIES®



5" X 11 13/16"  
AGILINA™ PLANK



6" X 9"  
CATALINA®





Old York



**STAY INSPIRED.**  
SEE MORE BORDER INSPIRATION  
@ PINTEREST.COM/BELGARD



**PROVIDE  
VERTICAL  
INTEREST**



**CREATE A  
WARM WELCOME**

## DEFINE YOUR SPACE

Incorporating multiple styles is a great way to segment your outdoor living areas into rooms without roofs. Adding a sleek border with a more natural stone, like in the image at right, creates the cozy feeling of a hearth rug in front of the fireplace.



BREAK  
FROM THE  
NORM



## MIX TEXTURES

From sleek contemporary to the look of cut slate Belgard offers a variety of textures to play with. Go for a monochrome look, like in the image at right, to maximize the tactile experience without overwhelming the eye.



ADD ACCENTS  
TO MAKE THE  
ORDINARY  
EXTRAORDINARY



# BORDERS & BANDING



# COLOR TECHNOLOGY

## BRIGHTER COLORS, LONGER

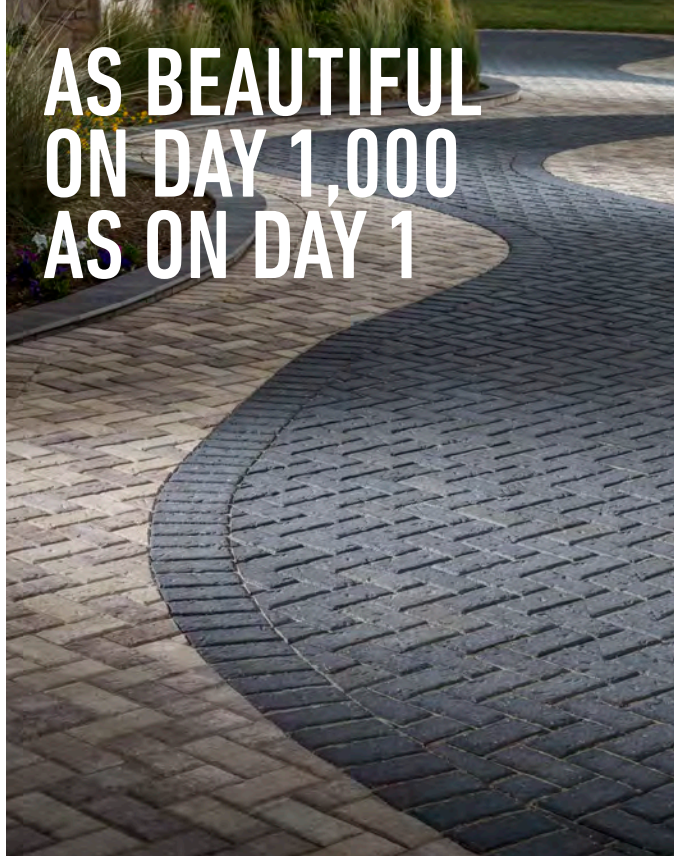
Belgard® implements a variety of cutting edge technologies to improve product durability and make sure colors stand the test of time.

Our core color process evenly disperses color throughout each paver, creating a consistent and beautiful look. The use of oxide pigmentation to disperse colors consistently throughout the paver allows for further stressing, giving homeowners more options without sacrificing quality.





# AS BEAUTIFUL ON DAY 1,000 AS ON DAY 1



## TRUE COLOR TRUECOLOR ENHANCES COLOR & DURABILITY

### WHAT IS TRUECOLOR?

Belgard's exclusive premium surface level color-enhancing protectant. TrueColor enhances the original color depth of Belgard pavers and extends color fastness and durability over time. It also makes treated pavers more resistant to everyday wear and tear such as UV rays, stains and even acid.

### HOW IT WORKS

Surface texture has a lot to do with how our eyes perceive color. TrueColor works to fill in surface roughness, resulting in pavers with deeper, richer colors.

### PROTECTION FROM FADING

Concrete fades due to everyday wear and tear and exposure to ultraviolet radiation in sunlight. Over time, the fine particles containing pigment on the surface of the paver may be worn away leaving the paver looking faded. Pavers with high strength and low absorption will retain surface and color integrity over time. Integral color enrichment systems such as TrueColor can help raise paver quality and preserve color depth and hues.



EXTENDS  
DURABILITY



ENHANCES  
COLOR DEPTH



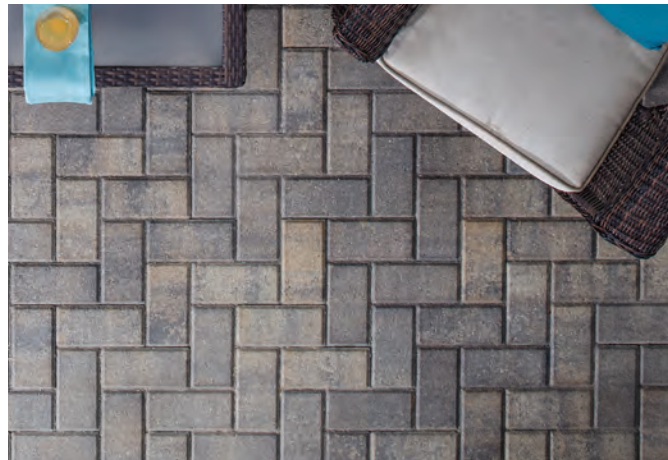
PROTECTS FROM  
UV RAYS



Old York Paver



Old York Paver  
with TrueColor



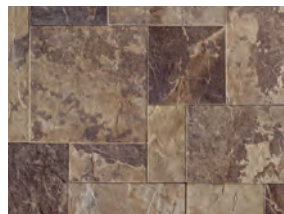
## TEXTURGARD EXTENDS PAVER LIFE

Texturgard fuses a top layer of rich pigments with Belgard's core color process. The result is a paver with a richness and purity of color that's sleek and vibrant,

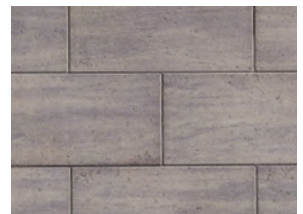


## SATURA COMBINES VIBRANT COLOR WITH REALISTIC TEXTURES

Satura allows us to not only expand our color palette, but to obtain levels of saturation never achieved before in concrete products. From natural stone to wood grain, top trending finishes are easily achieved with Satura.



Natural Stone Look



Wood Look



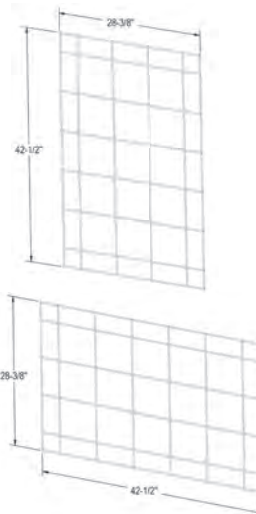


## BUILD COLUMNS IN A SNAP

Tandem® Column Kit is an innovative, versatile system that can be used to create attractive, easy-to-install and durable columns. Great for use in residential and light commercial hardscape projects.

## WALL IT OFF WITH U START

One of Belgard's latest innovations, U Start Base Block® is a universal base course for landscaping walls that promotes cost savings and installation time efficiency.



## TANDEM® MODULAR GRID GIVES YOU ENDLESS POSSIBILITIES

Construct virtually any design up to 7' tall by simply attaching the grids to a wooden structure and connecting the veneers. Build an outdoor kitchen, skirt a deck, run electrical for lighting/sound, construct seat walls... the possibilities are endless.



# INSTALLATION INNOVATIONS

## PRODUCTS THAT MAKE INSTALLATION EASIER

Belgard® offers several products designed to make installation easier and more efficient. Why spend more time and money when you don't have to?

PICTURED: TANDEM COLUMN KIT





# LET US INSPIRE YOU.









# MAKE A SPLASH







#### TOP

Lafitt Rustic Slab | Amaretto  
 Old York Border | Charcoal  
 London Cobble Border | Liberty Blend  
 Marina Coping | Sable Blend

#### BOTTOM

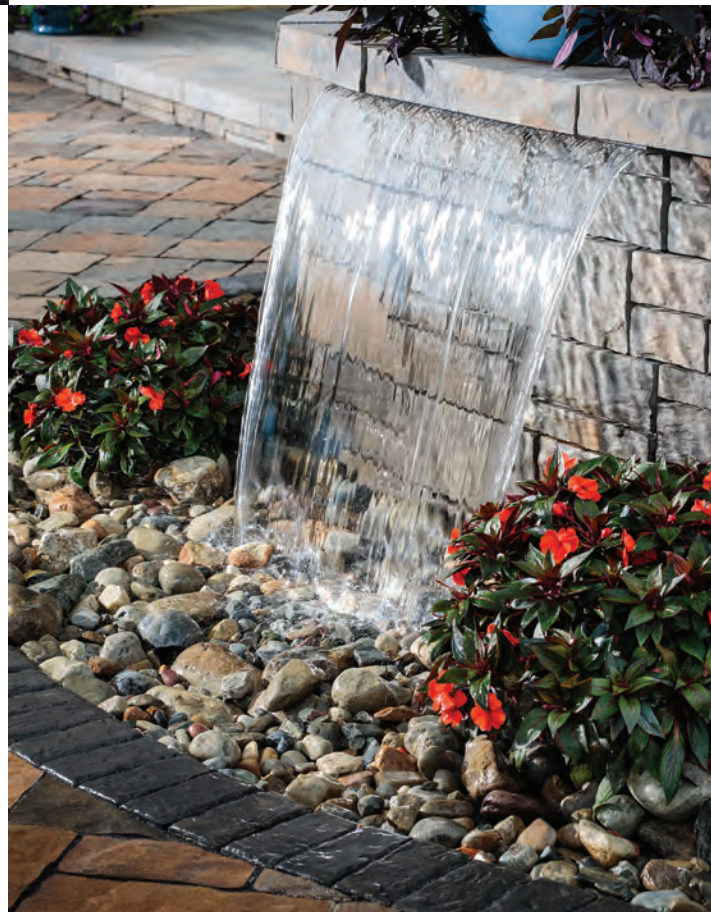
Ashlar Tandem | Bella  
 Tandem Wall Cap | Bella  
 Mega-Lafitt | Silex Blend  
 Old York Border | Charcoal

#### OPPOSITE

Lafitt Rustic Slab | Bella

## PAVERS COPING WALLS

Whether bringing new life to an old pool or installing a new one, Belgard® pavers and wall products can help you create stunning poolscape that go beyond the water's edge to connect all of your outdoor spaces into one flowing design.







**TOP**  
Catalina Slate | Amaretto

**OPPOSITE**  
Quarziti 2.0 Porcelain Pavers | Waterfall







#### TOP

Lafitt Rustic Slab | Silex Blend  
Old York Border | Charcoal  
Belair Wall | Silex Blend

#### BOTTOM

Ashlar Tandem | Silex Blend  
Tandem Column Kit | Silex Blend  
Lafitt Paver | Silex Blend

#### OPPOSITE

Bordeaux Series  
Fireplace & Wood Boxes  
Sienna Body, Buff Accent



## COZY UP ENTERTAIN MAKE MEMORIES

With Belgard®, you can create outdoor living rooms that become the hub of activity for your family. Imagine roasting marshmallows over a crackling fire or cuddling up on a cool fall evening in front of the hearth. Now that's living.



# CREATE A SPARK











#### TOP

Brighton Series Fireplace | Gascony Tan Body, Ashbury Haze Accent  
Mega-Arbel | Bella

#### OPPOSITE

Bristol Series Fireplace & Wood Boxes | Gascony Tan Body, Ashbury Haze Accent  
Lafitt Grana | Silex Blend









#### TOP

London Cobble | Bella

#### BOTTOM

Ardesie Porcelain Pavers | Island

#### OPPOSITE

Mega-Arbel | Silex Blend

Old York Border | Charcoal

Lafitt Rustic Slab | Silex Blend

Weston Stone | Sable Blend

## FAMILY FRIENDS FUN

When you create an outdoor living room, you can be sure it will not only be filled with life, but with moments that last a lifetime. Whether hosting an impromptu dinner party, inviting the neighbors over, or just spending some quality time with your family, Belgard® is your source for beautiful outdoor designs.







**TOP**

Lafitt Rustic Slab | Amaretto  
Weston Stone | Bella

**OPPOSITE**

Mega-Arbel | Bella Blend  
Weston Stone | Bella  
Bristol Series Brick Oven |  
Gascony Tan Body, Ashbury Haze Accent







#### TOP

Ashlar Tandem Wall | Danville Blend  
Mega-Arbel | Silex Blend

#### BOTTOM

Weston Stone | Bella Blend

#### OPPOSITE

Bordeaux Series  
Fireplace & Wood Boxes  
Sienna Body, Buff Accent  
Belair Wall | Amaretto Blend  
Lafitt Paver | Amaretto  
Marina Coping | Silex Blend



## COLOR TEXTURE PATTERN

It's the details that take a design from excellent to enviable. Using caps and coping to offset walls, seating and fire features gives your space that little something extra. Mix textures or use a complementing color for a fresh look that's eye-catching and unique.



# CAP IT OFF











## TOP

Diamond 9D | Sable Blend



## OPPOSITE

Belair Wall | Bella Blend

Landings Step Unit | Sable Blend



## PAVERS & SLABS

- NEW** 38 Agilina™ Plank 
- NEW** 40 Catalina Grana® 
- 42 Catalina™ Slate 
- 44 Country Manor®
- 46 Holland Stone
- 48 Lafitt® Paver 
- 49 Lafitt® 6x9 
- 50 Lafitt® Grana Slab 
- 52 Lafitt® Rustic Slab 
- 54 Legacy Anchor Cobble

55 London Cobble

**NEW** 56 Madria™ 

58 Mega-Arbel® 

59 Mega-Lafitt® 

60 Old World Paver™ 

61 Old York™  

62 Provence Slab™ 

## PERMEABLE

64 Aqua Roc™ I 

66 Eco Dublin® 

67 Turfstone™ 

## PORCELAIN

68 Ardesie

69 Esprit

70 Nau

71 Noon

72 Quarziti 2.0

74 Stones 2.0

76 Sundeck

**NEW** 77 Verona

78 Unico

**NEW** 80 Porcelain Veneer

**NEW** 81 Accessories

## LEGEND



WALKWAYS



PATIOS



POOLS



DRIVEWAYS



PERMEABLE



TRUECOLOR



ADA  
COMPLIANT



# PAVERS + SLABS

## CLASSIC CONTEMPORARY STONE TEXTURE

Create eye-catching walkways, patios and driveways that express your personal sense of style. Belgard® pavers are strong, durable and environmentally friendly, helping you create beautiful spaces that will stand the test of time. You pick the look.

## WE'LL PAVE THE WAY



*Pictured: Agilina Plank | Siltex Blend*

OLD WORLD PAVER



# NEW

## AGILINA™ PLANK

PAVERS WITH TRUECOLOR™



Inspired with a distinctive natural stone look, Agilina pavers are ideal for projects that merge the old-world aesthetics with a more contemporary look, thanks to the multiple widths, that can be mixed together to achieve random patterns.

### AVAILABLE COLORS



Amaretto



Bella



Sable Blend



Sillex Blend

### SHAPES & SIZES

3-Piece - 5" 80mm

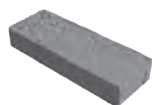
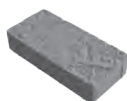
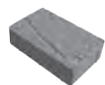


5 x 11<sup>13</sup>/<sub>16</sub> x 3<sup>1</sup>/<sub>8</sub>

5 x 15<sup>3</sup>/<sub>4</sub> x 3<sup>1</sup>/<sub>8</sub>

5 x 19<sup>11</sup>/<sub>16</sub> x 3<sup>1</sup>/<sub>8</sub>

3-Piece - 7<sup>1</sup>/<sub>2</sub>" 80mm



7<sup>1</sup>/<sub>2</sub> x 11<sup>13</sup>/<sub>16</sub> x 3<sup>1</sup>/<sub>8</sub>

7<sup>1</sup>/<sub>2</sub> x 15<sup>3</sup>/<sub>4</sub> x 3<sup>1</sup>/<sub>8</sub>

7<sup>1</sup>/<sub>2</sub> x 19<sup>11</sup>/<sub>16</sub> x 3<sup>1</sup>/<sub>8</sub>







Sable Blend



# NEW

## CATALINA GRANA®

PAVERS WITH TRUECOLOR™

Catalina Grana offers crisp, clean lines and a smooth, linear surface create a contemporary feel that's both eye-pleasing and comfortable. Perfect for high-traffic areas, Catalina is fully ADA compliant.



Bella

### AVAILABLE COLORS



Amaretto



Bella



Sable Blend



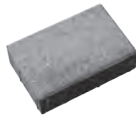
Silix Blend

### SHAPES & SIZES

#### 3-Piece Stone



6 x 12 x 2 3/8



9 x 12 x 2 3/8



12 x 12 x 2 3/8







Silex Blend



# CATALINA™ SLATE

## PAVERS WITH TRUECOLOR™



Catalina Slate combines the flexibility of modular design with the textured finish of natural slate.



Silex Blend

### AVAILABLE COLORS



Amaretto



Bella



Sable Blend



Silex Blend

### SHAPES & SIZES

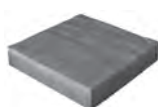
#### 3-Piece Stone



6 x 12 x 2 $\frac{3}{8}$



9 x 12 x 2 $\frac{3}{8}$



12 x 12 x 2 $\frac{3}{8}$







Sable Blend



# COUNTRY MANOR®

## PAVER



Bring old-world European charm to modern design with the timeless cobbled look of Country Manor. Featuring a well traveled texture and rustic appeal this paver adds a classic warmth and sophistication to any project.



Bella

## AVAILABLE COLORS



Bella



Flash Brown Blend



Sable Blend

## SHAPES & SIZES

### Square



6¼ x 6¼ x 2⅜

### Large Rectangle



6¼ x 9⅜ x 2⅜





Flash Brown Blend



# HOLLAND STONE

## PAVERS



The classic shape, smooth surface and multiple color options make Holland Stone ideal for creating a wide variety of traditional looks. Holland Stone is also an excellent choice as a border element.



Charcoal & Liberty Blend

## AVAILABLE COLORS



Bella



Charcoal  
with Texturgard



Flash Brown Blend  
with Texturgard



Liberty Blend  
with Texturgard



Sable Blend  
with Texturgard



Silex Blend

## SHAPES & SIZES

60mm



$3\frac{15}{16} \times 7\frac{7}{8} \times 2\frac{3}{8}$

### SPECIAL ORDER

80mm

$3\frac{15}{16} \times 7\frac{7}{8} \times 3\frac{1}{8}$







Flash Brown Blend



# LAFITT® PAVER

PAVERS WITH TRUECOLOR™



Lafitt Paver features one of the most natural-looking textures available in a modern paver, combining the look and feel of cut flagstone with the strength and durability of Belgard®.



Sillex Blend

## AVAILABLE COLORS



Amaretto



Bella



Danville Blend



Sable Blend



Sillex Blend

## SHAPES & SIZES

3-Piece Modular



3 1/16 x 7 1/16 x 2 3/8



7 1/16 x 7 1/16 x 2 3/8



7 1/16 x 10 5/8 x 2 3/8





# LAFITT® 6x9

PAVERS WITH TRUECOLOR™



Creating a unique look is easy with the Lafitt 6 x 9 paver. Add borders or custom designs with the stunning look and feel of cut flagstone. Available in six colors to compliment any aesthetic.



Charcoal

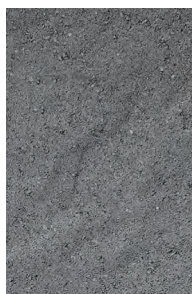
## AVAILABLE COLORS



Amaretto



Bella



Charcoal



Sable Blend



Silex Blend



Summer Hill

## SHAPES & SIZES

6 x 9



6 x 9 x 2<sup>3</sup>/<sub>8</sub>





# LAFITT® GRANA SLAB

PAVERS WITH TRUECOLOR™



Lafitt Grana Slab pairs sleek contemporary style with modern design innovation, featuring a smooth finish and large-scale units.



Summer Hill

## AVAILABLE COLORS



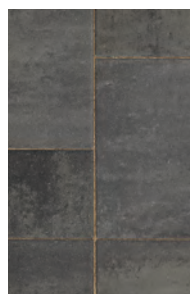
Amaretto



Bella



Danville Blend



Sable Blend



Silex Blend



Summer Hill

## SHAPES & SIZES

3-Piece Modular



7 $\frac{3}{8}$  x 14 $\frac{7}{8}$  x 2 $\frac{3}{8}$



14 $\frac{7}{8}$  x 14 $\frac{7}{8}$  x 2 $\frac{3}{8}$



14 $\frac{7}{8}$  x 22 $\frac{7}{16}$  x 2 $\frac{3}{8}$







Silex Blend



# LAFITT® RUSTIC SLAB

PAVERS WITH TRUECOLOR™



Lafitt Rustic Slab features the look and texture of cut slate paired with the versatility of larger-scale modular design. Three shapes allow for a wide variety of design options, giving homeowners the ability to create eye-catching outdoor spaces, with a natural slate appearance.



Amaretto

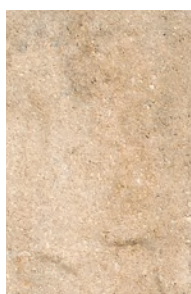
## AVAILABLE COLORS



Amaretto



Bella



Danville Blend



Sable Blend



Sillex Blend



Summer Hill

## SHAPES & SIZES

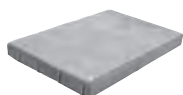
3-Piece Modular



14 $\frac{7}{8}$  x 7 $\frac{3}{8}$  x 2 $\frac{3}{8}$



14 $\frac{7}{8}$  x 14 $\frac{7}{8}$  x 2 $\frac{3}{8}$



14 $\frac{7}{8}$  x 22 $\frac{1}{16}$  x 2 $\frac{3}{8}$







Silex Blend



# LEGACY ANCHOR COBBLE

PAVERS WITH TEXTUREGARD®



The distinct look of Anchor Cobble will truly set your outdoor living project apart. Whether using it for a patio, pool deck, or walkway, Anchor Cobble's durable and easy-to-maintain surface make it a popular choice.



Flash Brown Blend

## AVAILABLE COLORS



Flash Brown Blend



Liberty Blend



Sable Blend

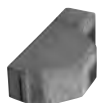
## SHAPES & SIZES

Cobble



8 $\frac{5}{8}$  x 6 x 2 $\frac{3}{8}$

Edger



8 $\frac{5}{8}$  x 4 $\frac{1}{4}$  x 2 $\frac{3}{8}$





# LONDON COBBLE

## PAVERS

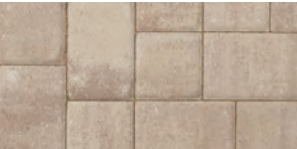


The versatile London Cobble offers a tailored, architectural look with gently rounded corners and a domed pillowtop surface. The subtle color combinations and multiple pattern options make it ideal for crafting intricate designs.



Bella

### AVAILABLE COLORS



Amaretto



Bella



Charcoal  
with Texturgard



Flash Brown Blend  
with Texturgard



Liberty Blend  
with Texturgard



Sable Blend  
with Texturgard



Silex Blend

### SHAPES & SIZES

Square



6 x 6 x 2 3/8

Rectangle



6 x 9 x 2 3/8





# NEW MADRIA™

SLABS WITH SATURA™



Madria slab emulates the look of wide wooden planks in a durable low-maintenance paver. Featuring Satura™ color technology, Madria provides natural woodgrain variegations and distinctive hues that are resistant to stains and fading, ensuring lasting beauty.



Almond Brown

## AVAILABLE COLORS



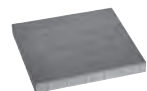
Almond Brown



Pewter

## SHAPES & SIZES

### Large Square



22½ x 22½ x 2⅜

### Large Rectangle



15 x 30 x 2⅜







Pewter



# MEGA-ARBEL®

## PAVERS WITH TRUECOLOR™



Mega-Arbel offers the look and feel of natural flagstone. With an irregular shape and virtual joints, it creates a random look that flows harmoniously into the surrounding landscape.



Silex Blend

### AVAILABLE COLORS



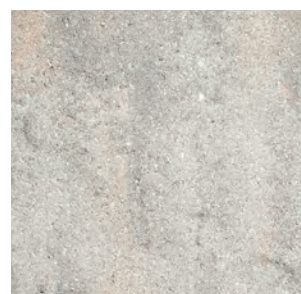
Amaretto



Bella



Sable Blend



Silex Blend

### SHAPES & SIZES

Patio Slab



15 $\frac{3}{8}$  x 21 x 2 $\frac{3}{8}$

**SPECIAL ORDER**

Driveway Slab

15 $\frac{3}{8}$  x 21 x 3 $\frac{1}{8}$





# MEGA-LAFITT®

## PAVERS WITH TRUECOLOR™



Mega-Lafitt features one of the most natural-looking textures available in a modular paver, combining the look and feel of cut flagstone with the strength and durability of Belgard®.



Bella

### AVAILABLE COLORS



Bella



Silex Blend

### SHAPES & SIZES

3-Piece Modular - 80mm



10½ x 5¼ x 3⅞



10½ x 10½ x 3⅞



10½ x 15¾ x 3⅞

#### SPECIAL ORDER

Large Square  
15¾ x 15¾ x 3⅞





# OLD WORLD PAVER™

## PAVERS



Reminiscent of the cobbled streets of Europe, Old World Paver is crafted with a natural stone cleft finish for the look and feel of time-worn stone. Ideal for high traffic areas or for use as a border.



Bella

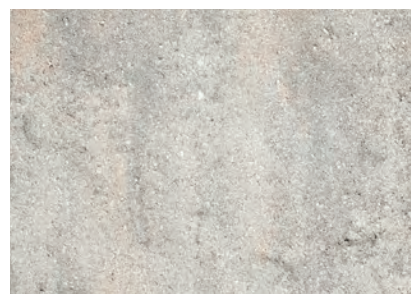
## AVAILABLE COLORS



Bella



Sable Blend



Silix Blend

## SHAPES & SIZES

3-Piece Modular - 80mm



$5\frac{1}{8} \times 7\frac{3}{4} \times 3\frac{1}{8}$



$5\frac{1}{8} \times 10\frac{1}{4} \times 3\frac{1}{8}$



$5\frac{1}{8} \times 12\frac{13}{16} \times 3\frac{1}{8}$

Larger joints between pavers allow Old World Paver to be installed as a permeable paver option.



# OLD YORK™

PAVERS WITH TRUCCOLOR™



Old York pavers provide a natural yet elegant look that will bring your outdoor space to life. With the appearance of weathered clay brick and a wide assortment of face textures and installation patterns,



Summer Hill

## AVAILABLE COLORS



Bella



Charcoal



Sable Blend



Silex Blend



Summer Hill

## SHAPES & SIZES

Paver



3<sup>15</sup>/<sub>16</sub> x 7<sup>7</sup>/<sub>8</sub> x 2<sup>3</sup>/<sub>8</sub>

Larger joints between pavers allow Old York to be installed as a permeable paver option.





# PROVENCE SLAB™

## PAVERS WITH SATURA™



Designed using our revolutionary Satura color technology, Provence Slab offers the most natural looking paver on the market that emulates the look and texture of natural bluestone or ledgerrock.

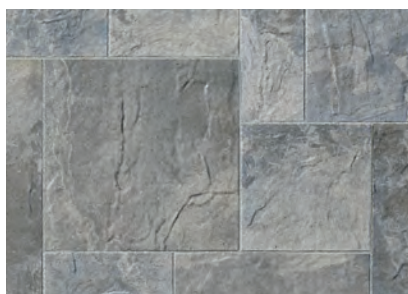


Black Hills

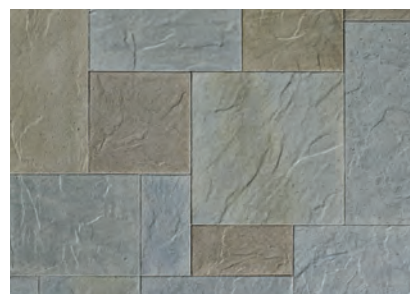
### AVAILABLE COLORS



Black Hills



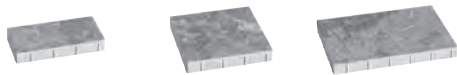
Niagara Gray



Shenandoah

### SHAPES & SIZES

#### 3-Piece Modular



7½ x 15 x 2⅜

15 x 15 x 2⅜

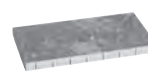
15 x 22½ x 2⅜

#### Large Square SPECIAL ORDER



22½ x 22½ x 2⅜

#### Large Rectangle SPECIAL ORDER



15 x 30 x 2⅜

Contact your local Belgard representative for options and availability







Niagara Gray



# AQUA ROC™ I

## PERMEABLE PAVERS



With classic appeal, Aqua Roc offers a green solution for those who love the look of a traditional paver. Able to support heavy vehicular loads, Aqua Roc is an excellent choice for a variety of residential needs.



Sable Blend

## AVAILABLE COLORS



Bella



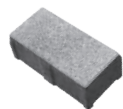
Sable Blend



Silex Blend

## SHAPES & SIZES

Aqua Roc I



4½ x 9 x 3⅞





Silex Blend



# ECO DUBLIN®

## PERMEABLE PAVERS



Eco Dublin provides an environmental solution with the contemporary modular look of cut stone, which pairs well with nearly any architectural style.



Silex Blend

## AVAILABLE COLORS



Bella



Sable Blend



Silex Blend

## SHAPES & SIZES

### 3-Piece Modular



6⅞ x 3⅞ x 3⅞



6⅞ x 6⅞ x 3⅞



6⅞ x 10⅞ x 3⅞



# TURFSTONE™

## PERMEABLE PAVERS



Turfstone stabilizes soil erosion by allowing rainwater to gradually filter back into soil. Its eco-friendly design reduces run-off while allowing greenery to grow through it, creating a unique natural look.



Gray

## AVAILABLE COLORS



Gray

## SHAPES & SIZES

Block - 80mm



15 $\frac{3}{4}$  x 23 $\frac{5}{8}$  x 3 $\frac{1}{8}$

Turfstone is manufactured to a different ASTM standard than pavers and paving slabs. Vehicular applications are limited to residential driveway, overflow parking or emergency access lanes only.



# ARDESIE

## STONE FINISH PORCELAIN PAVERS

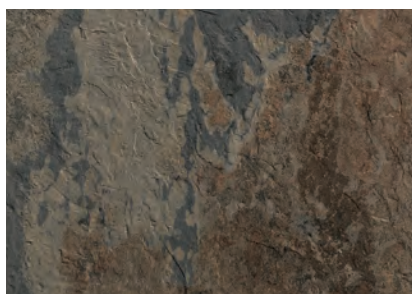


Ardesie captures the elegance of natural stone in a contemporary way. The end result is a slate-like look with the durability of porcelain. Expect the wide range of color variation that is inherent in natural slate.

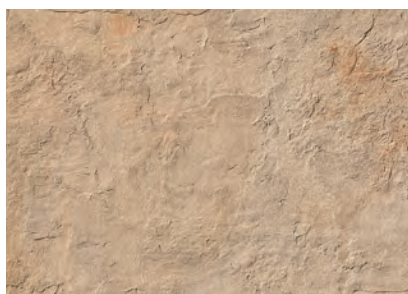


African Stone

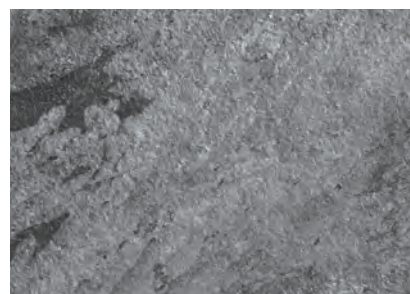
## AVAILABLE COLORS



African Stone  
AD 03 NAT\* – V4



Island **SPECIAL ORDER**  
AD 02 NAT – V3



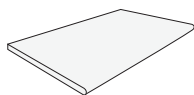
Vulcan  
AD 05 NAT – V3

## SHAPES & SIZES



23.54 x 23.54 x 3/4

Unico



12.99 x 23.54 x 3/4

See page 78  
for full product  
information.



Spacers are recommended for all porcelain paver installations. PLEASE NOTE: For vehicular applications, must be a mortar install over a concrete slab.



# SPECIAL ORDER ESPRIT

## STONE FINISH PORCELAIN PAVERS



Esprit offers a soft, luxurious interpretation of natural stone with subtle natural veins and a refined texture that creates an elegant, understated look.



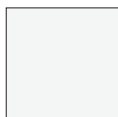
Crema Luna

## AVAILABLE COLORS



Crema Luna  
EP 04 ST - V2

## SHAPES & SIZES



23.54 x 23.54 x 3/4



Spacers are recommended for all porcelain paver installations.  
PLEASE NOTE: For vehicular applications, must be a mortar  
install over a concrete slab.



# NAU

## WOOD FINISH PORCELAIN PAVERS



NAU interprets the character of reclaimed wood on a durable porcelain paver. Available planks, NAU creates outdoor living spaces with distinctive urban flair.



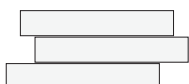
Fado

## AVAILABLE COLORS



Fado  
NA 01 RD – V3

## SHAPES & SIZES



7.80 x 47.17 x 3/4



Spacers are recommended for all porcelain paver installations. PLEASE NOTE: For vehicular applications, must be a mortar install over a concrete slab.



# NOON

## WOOD FINISH PORCELAIN PAVERS

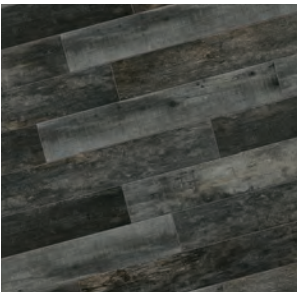


Noon is a contemporary expression of the simple life. The collection combines the warmth of natural wood with the elegance of glossy wood, incorporating all the extraordinary technical characteristics of porcelain stoneware: timeless and fearless.



Ember

### AVAILABLE COLORS



Charcoal  
NN 05 NAT - V4



Daylight  
NN 01 NAT - V4

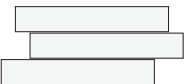


Ember  
NN 02 NAT - V4



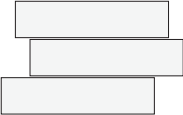
Honey  
NN 03 NAT - V4

### SHAPES & SIZES



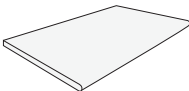
7.80 x 47.17 x 3/4

#### SPECIAL ORDER



11.73 x 47.17 x 3/4

#### Unico



12.99 x 23.54 x 3/4

See page 78  
for full product  
information.



Spacers are recommended for all porcelain paver installations.  
PLEASE NOTE: For vehicular applications, must be a mortar  
install over a concrete slab.



# QUARZITI 2.0

## STONE FINISH PORCELAIN PAVERS



Quarziti 2.0 is an interpretation of stone that incorporates a gently shading effect to recreate an authentic diversity of natural elements. A variety of modular shapes offer ultimate design flexibility.

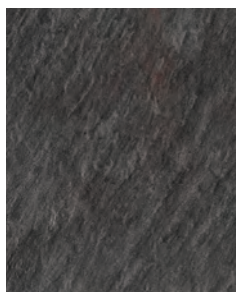


Glacier

## AVAILABLE COLORS



Glacier  
QR 01 NAT - V3



Mantle  
QR 05 NAT - V3



Mountains  
QR 02 NAT - V3

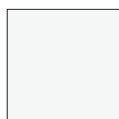


River  
QR 04 NAT - V3



Waterfall  
QR 03 NAT - V3

## SHAPES & SIZES



23.54 x 23.54 x 3/4

### SPECIAL ORDER Modular\*



11.73 x 23.54 x 3/4



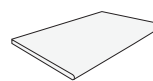
23.54 x 35.35 x 3/4

\* Modular pieces sold as a pair only.



23.54 x 23.54 x 3/4

### Unico



12.99 x 23.54 x 3/4

See page 78  
for full product  
information.



Spacers are recommended for all porcelain paver installations. PLEASE NOTE: For vehicular applications, must be a mortar install over a concrete slab.





Mountains



# STONES 2.0

## STONE FINISH PORCELAIN PAVERS



Stones 2.0 offers the supple texture of groundface stone in a large modular shape, ideal for creating stylish contemporary outdoor living spaces.



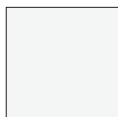
Pierre Bleue Sablée

### AVAILABLE COLORS



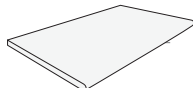
Pierre Bleue Sablée  
SO 11 ST – V3

### SHAPES & SIZES



23.54 x 23.54 x 3/4

Unico



12.99 x 23.54 x 3/4

See page 78  
for full product  
information.



Spacers are recommended for all porcelain paver installations. PLEASE NOTE: For vehicular applications, must be a mortar install over a concrete slab.







# SUNDECK

## WOOD FINISH PORCELAIN PAVERS

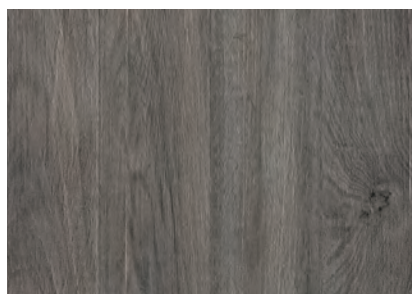


Sundeck is an outdoor interpretation of indoor wood flooring with striations and shading that capture the essence of various wood finishes.



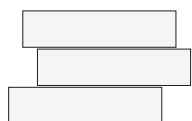
Spirit

## AVAILABLE COLORS



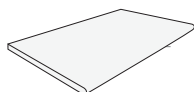
Spirit  
SD 03 RD - V3

## SHAPES & SIZES



11.73 x 47.17 x  $\frac{3}{4}$

Unico



12.99 x 23.54 x  $\frac{3}{4}$

See page 78  
for full product  
information.



Spacers are recommended for all porcelain paver installations. PLEASE NOTE: For vehicular applications, must be a mortar install over a concrete slab.



# NEW VERONA

## STONE FINISH PORCELAIN PAVERS

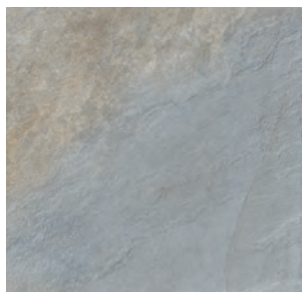


The Verona line emulates a variety of natural stones to create distinctive outdoor living designs. Each available color was fashioned to closely mimic the specific natural qualities of a different quarried stone.



Blue Stone

## AVAILABLE COLORS



Blue Stone – V3



Platinum – V3



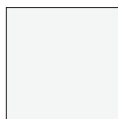
Taos – V3



Yukon – V4

## SHAPES & SIZES

### SPECIAL ORDER



23.54 x 23.54 x 3/4



Spacers are recommended for all porcelain paver installations.  
PLEASE NOTE: For vehicular applications, must be a mortar install over a concrete slab.



# UNICO

## STEPS / COPING



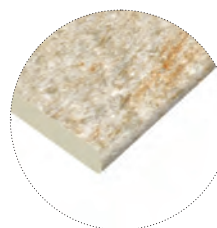
Two installation needs, a single solution.  
This versatile porcelain unit is processed on both sides to give you maximum flexibility and design freedom.

Unico can be used as a step and as a coping for swimming pools. With a rounded, bullnose edge or straight edge, this uniquely functional border piece looks great from every angle.

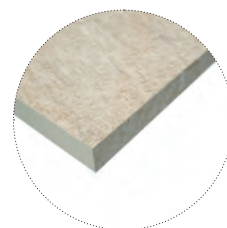


### SIZE

12.99 x 23.54 x 3/4  
Double sided special trim

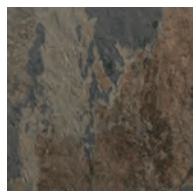


ROUNDED EDGE



STRAIGHT EDGE

## AVAILABLE COLORS



African Stone  
AD 03 NAT - V4



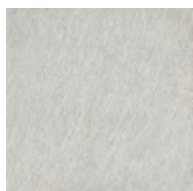
Island  
AD 02 NAT - V3



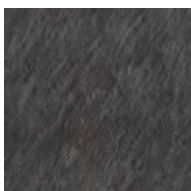
Vulcan  
AD 05 NAT - V3



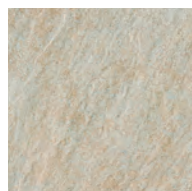
Pierre Bleue Sablée  
SO 11 ST - V3



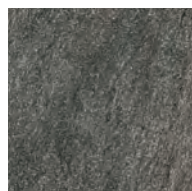
Glacier  
QR 01 NAT - V3



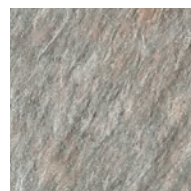
Mantle  
QR 05 NAT - V2



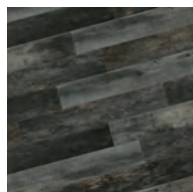
Mountains  
QR 02 NAT - V3



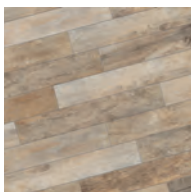
River  
QR 04 NAT - V3



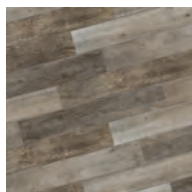
Waterfall  
QR 03 NAT - V3



Charcoal  
NN 05 ST - V4



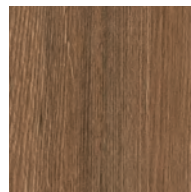
Daylight  
NN 01 ST - V4



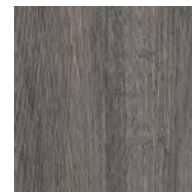
Ember  
NN 02 ST - V4



Honey  
NN 03 ST - V4



Origin  
SD 01 RD - V2



Spirit  
SD 02 ST - V4





Mountains



# SPECIAL ORDER PORCELAIN VENEER

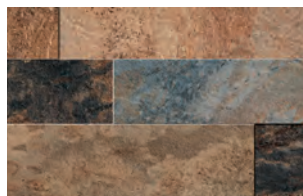
BY MIRAGE®

Create stylish, harmonious outdoor and indoor living environments with Mirage Porcelain Veneer. Crafted in Italy, these veneers are designed to coordinate with various Belgard® porcelain pavers.



Island

## AVAILABLE COLORS



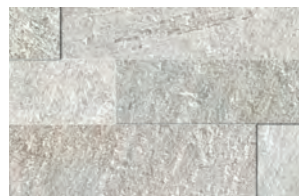
African Stone



Daylight



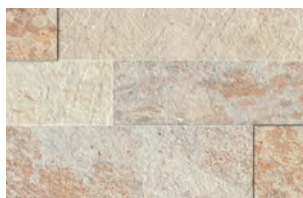
Ember



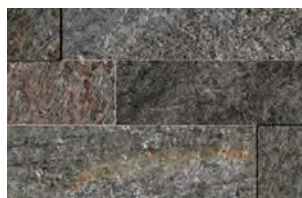
Glacier



Charcoal



Island

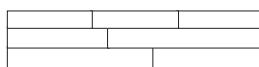


River



Waterfall

## SHAPES & SIZES

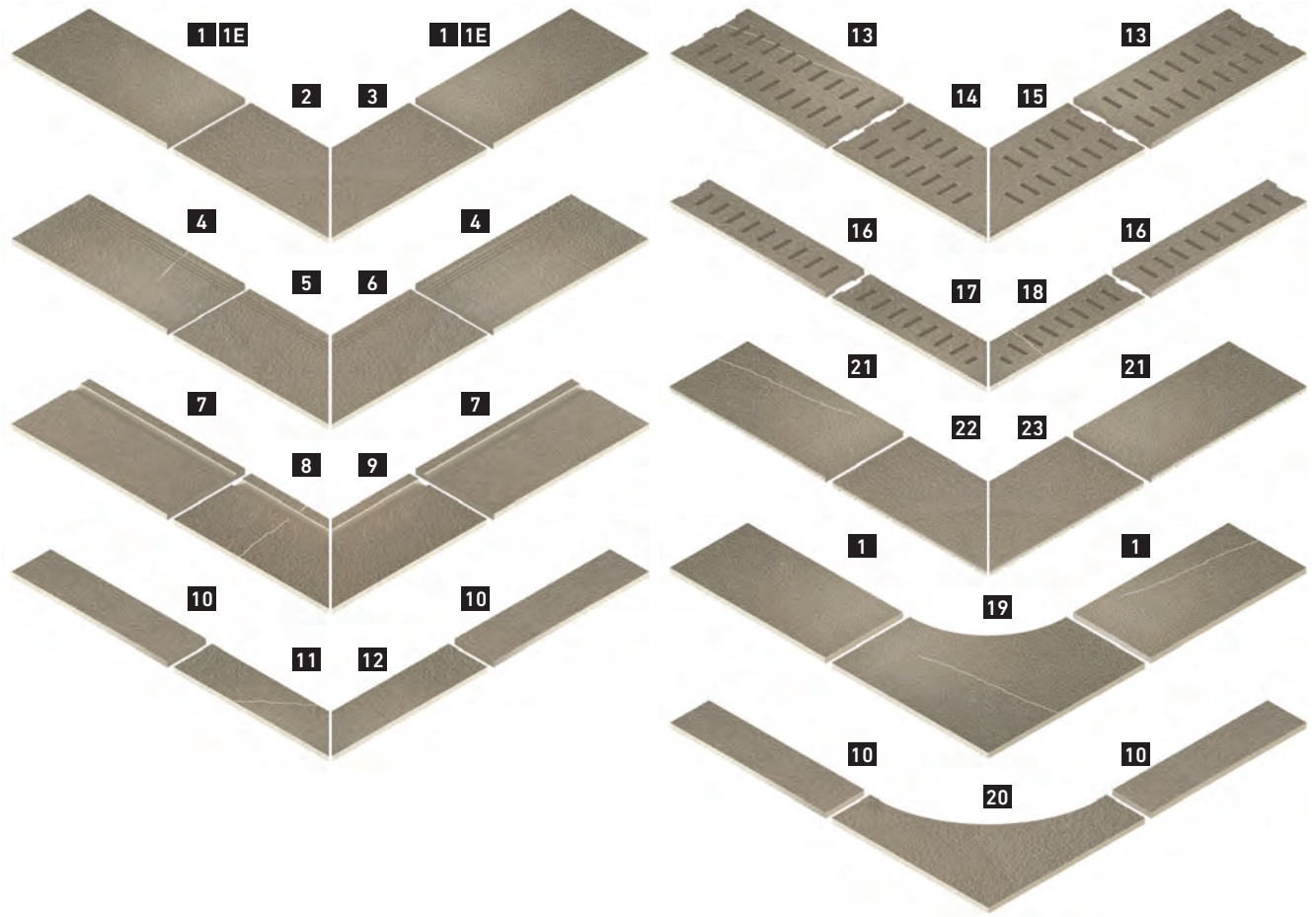


4.06 x 17.52



# SPECIAL ORDER PORCELAIN TRIM & COPING FOR POOLS\*

\*Special Order from Italy.  
Allow for minimum 12 week lead time.



**1** Straight edge 30 - 12" x 24"

**1E** UNICO step - 12" x 24"

**2 3** LH/RD straight corner 30 - 12" x 24"  
LH/RH straight corner with UNICO step  
to be cut on site from a 12" x 24" piece

**4** Grate edge - 12" x 24"

**5** LH corner grate - 12" x 24"

**6** RH corner grate - 12" x 24"

**7** Shaped edge - 12" x 24"

**8** LH shaped corner - 12" x 24"

**9** RH shaped corner - 12" x 24"

**10** Straight edge 15 - 6" x 24" / 8" x 24"

**11** LH straight edge 15 - 6" x 24" / 8" x 24"

**12** RH straight edge 15 - 6" x 24" / 8" x 24"

**13** Grate 30 - 12" x 24"

**14** LH corner grate 30 - 12" x 24"

**15** RH corner grate 30 - 12" x 24"

**16** Grate 15 - 6" x 24" / 8" x 24"

**17** LH corner grate 15 - 6" x 24" / 8" x 24"

**18** RH corner grate 15 - 6" x 24" / 8" x 24"

**19** Curved corner 30 - 24" x 24"

**20** Curved corner 15 - 24" x 24"

**21** Invisible grate - 12" x 24"

**22** LH invisible corner grate - 12" x 24"

**23** RH invisible corner grate - 12" x 24"



## WALLS

**86**

Aspen Stone®

**88**

Belair Wall®

NEW

**90**

Brookshire™

**92**

Diamond® 9D

**94**

Diamond Pro® PS

NEW

**95**

Diamond Pro® PS  
Quarried Face

**98**

Ashlar Tandem™

**100**

Lafitt Tandem™

**102**

Tandem®  
Column Kit

**103**

Tandem®  
Modular Grid

**104**

U Start Base Block®

**106**

Weston Stone™

*Weston Stone*

## LEGEND



STEPS



WALLS



FIRE PITS



KITCHENS



COLUMNS



TRUECOLOR™



# WALLS

## SCULPTED STANDARD or PRO

Whatever the building requirement, Belgard® wall systems are designed to work in harmony with your landscape. From functional retaining walls to fashionable outdoor living areas, you decide the application.

## WE'LL PAVE THE WAY



*Pictured: Weston Stone | Bella*



## FREESTANDING OR RETAINING

Knowing the difference between retaining and freestanding walls can have a positive impact on your project and lead to a more enjoyable outdoor space.

Freestanding walls allow you to divide your outdoor living space into different areas. They provide visual interest and can make even the largest yard feel more intimate. Freestanding walls easily incorporate with other features like fireplaces or outdoor kitchens to provide a cohesive look.

Retaining walls can have multiple purposes. Some help to increase usable space, whether that be a flower bed or added yard space, while other retaining walls help to prevent erosion. Either application is made possible by a wall system that holds back soil and properly manages drainage. Larger walls also utilize soil reinforcement for added strength and long-term stability.



PICTURED: BROOKSHIRE WALL



PICTURED: ASHLAR TANDEM & TANDEM COLUMN KIT

## ACCESSORIES

The details complete the design. Belgard offers caps, columns and other accessories to complement any hardscape design. Mix textures to add a modern look to a rough-hewn wall-face. Include a cap in a complementing color to add visual interest. The possibilities are endless!

Consult a Belgard Certified contractor for information on all of our wall products and to receive project design assistance through Belgard Design Studio.



TRUECOLOR product enhancement technology is an exclusive and proprietary enhancer applied to Belgard® products during the manufacturing processes. It penetrates deep into the product rendering it resistant to stains and acid rain, protecting each unit from the wear and tear of everyday use while enriching paver colors. Please refer to page 14 for more information.





# HOW TO SHOP WALLS

## FACE-STYLES

Outdoor areas of any size or shape can be transformed with Belgard wall products. The shapes and textures of our wall systems blend with the environment to create attractive and functional landscape wall features.



STRAIGHT  
*CRISP, CLEAN LINES*



VIRTUAL JOINT  
*MULTI-PIECE LOOK WITH  
THE INSTALLATION SPEED  
OF A SINGLE-PIECE SYSTEM*



QUARRIED  
*DISTINCTIVE LOOK OF  
HAND-WORKED STONE*



VICTORIAN  
*CLASSIC ELEGANCE  
WITH A STRAIGHT  
BEVELED FACE*



STONE CUT  
*ROUNDED AND  
ROUGH-HEWN*



# ASPEN STONE<sup>®</sup>

## RETAINING WALLS



Boasting a natural stone appearance, Aspen Stone is a lighter weight wall unit developed for easy installation. It's perfect for low-height retaining walls, tree ring borders, and garden terraces up to two feet in height.



Sable Blend

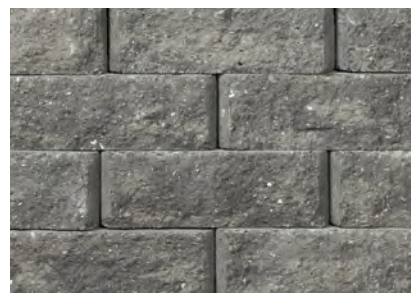
### AVAILABLE COLORS



Bella



Flash Brown Blend



Sable Blend

### SHAPES & SIZES

Block



Use 3" Universal Cap  
(page 92) as a coping.

4 x 11<sup>5</sup>/<sub>8</sub> x 7

Wall Innovations By







Flash Brown Blend



# BELAIR WALL®

## FREESTANDING / RETAINING WALLS



Belair Wall offers the sophisticated appearance of chiseled stone and is ideal for a variety of landscaping uses, as well as constructing outdoor living rooms, fire features and kitchens.



Bella

### AVAILABLE COLORS



Amaretto



Bella



Danville Blend



Sable Blend



Silex Blend

### SHAPES & SIZES

#### 6" Retaining Wall



6 x 8 x 8



6 x 16 x 8



6 x 16 x 8  
w / microjoint

#### 6" Freestanding Wall



6 x 8 / 6 x 11

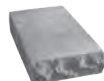


6 x 16 / 14 x 11

#### 30x30 Cap

Available in Brown and Charcoal  
Please contact Belgard Representative  
for more information.

#### Cap



3 x 7 / 8 x 13½

#### Corner/Column



6 x 16 x 8

#### Cap End



3 x 8 x 13½

#### Wall End



6 x 8 x 11

Wall Innovations By



**ANCHOR™**  
WALL SYSTEMS





Silex Blend

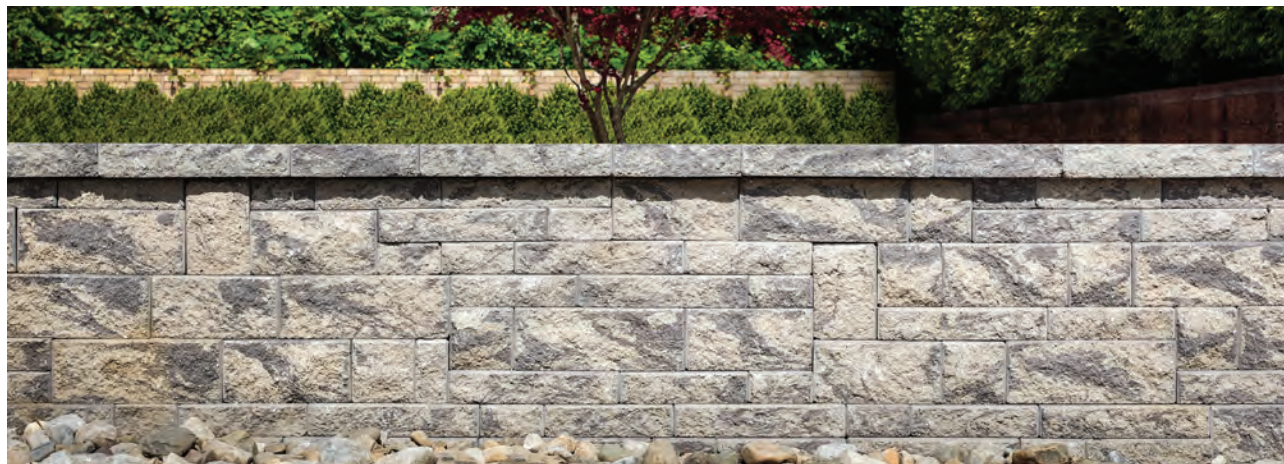


# NEW BROOKSHIRE™ WALL

FREESTANDING / RETAINING WALLS



Brookshire Wall combines the rugged, yet distinguished look of split stone with the simplicity of modular pin-connected retaining wall technology. This multiple-size and multi-faced system offers contractors unlimited design flexibility to create retaining and freestanding walls with either a random look or a variety of patterns.



Sable Blend

## AVAILABLE COLORS

Also available in Amaretto



Bella



Sable Blend



Silex Blend

## SHAPES & SIZES

### Brookshire Wall - 3"



3 x 6 / 4 x 9    3 x 12 / 10 x 9    3 x 16 / 14 x 9

### Brookshire Wall - 6"



6 x 6 / 4 x 9    6 x 12 / 10 x 9    6 x 16 / 14 x 9

30x30 Cap  
Available in Brown and Charcoal  
Please contact Belgard Rep  
for more information.

### 3" Corner/Column



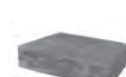
3 x 15 / 14 x 9

### 6" Corner/Column



6 x 15 / 14 x 9

### Cap



3 x 18 / 12 x 13

### Anchor™ Pins



5" L x .05" dia.  
Sold Separately

Also available antiqued.

Wall Innovations By

**ANCHOR™**  
WALL SYSTEMS





Bella

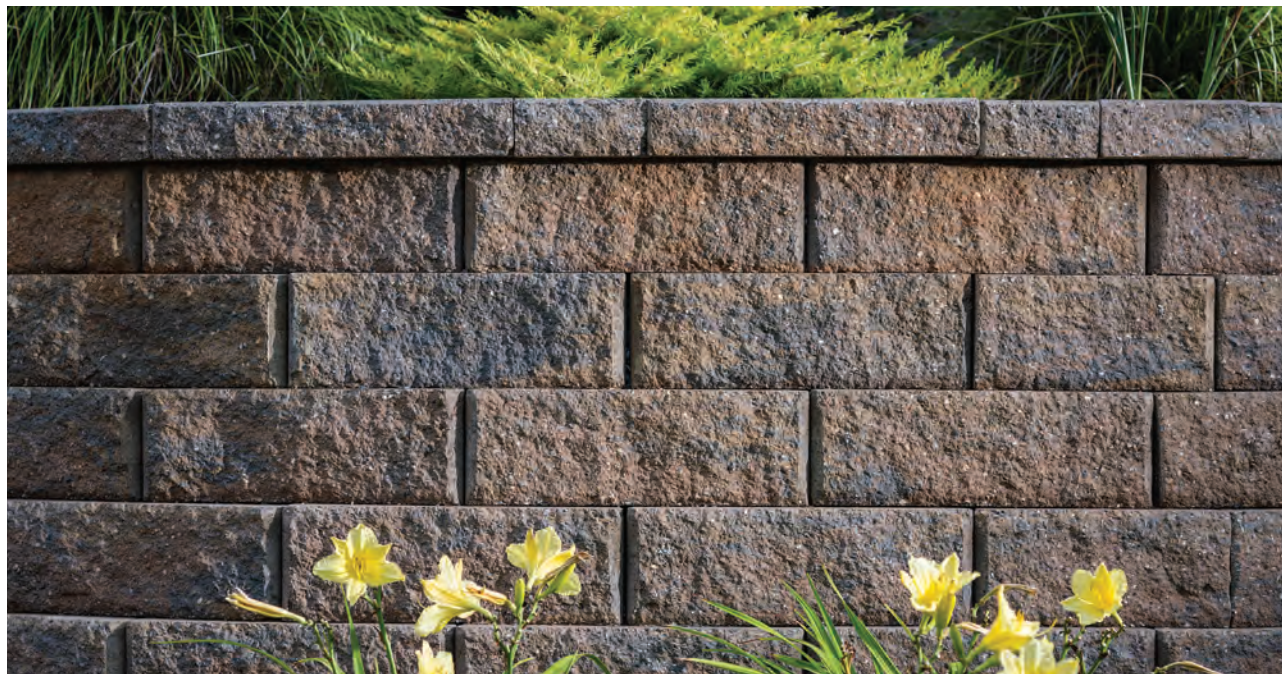


# DIAMOND® 9D

## RETAINING WALLS



The rough-hewn distressed look and easy installation system have made Diamond 9D a favorite for residential wall projects. The system is topped with a coordinating cap unit.



Bella

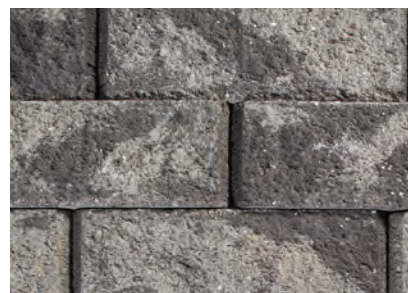
### AVAILABLE COLORS Also available in Amaretto and Silex Blend



Bella



Flash Brown Blend



Sable Blend

### SHAPES & SIZES

#### Block



6 x 17 $\frac{3}{4}$  x 9

#### 6" Corner



6 x 18 x 8

#### 3" Universal Cap



3 x 17 $\frac{1}{4}$  / 12 x 10 $\frac{3}{8}$

Wall Innovations By



#### STRUCTURE BOND™

Structure Bond Foam Adhesive is a one-component, durable and flexible exterior polyurethane adhesive for use in hardscaping projects. Developed for the construction industry, it bonds to block, brick, stone and pavers with precise delivery - no mess, no waste. Ideal for retaining walls and caps. Please refer to page 127 for more information.





Bella



# DIAMOND PRO® PS

## RETAINING WALLS



Contractors choose Diamond Pro wall systems due to their time-tested strength. Diamond Pro PS utilizes a pin system as a location device in installation.



Flash Brown Blend

### AVAILABLE COLORS

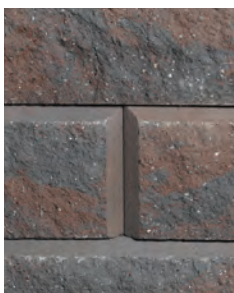
Swatches represent product color only, not surface texture or face style.



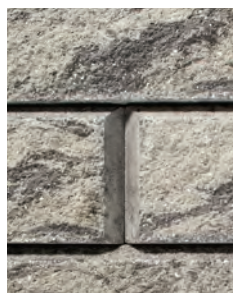
Bella\*



Brown\*\*



Flash Brown\*



Sable Blend



Tan\*\*

### SHAPES & SIZES

#### Block



8 x 18 x 12

#### Corner



8 x 18 x 9

#### 4" Universal Cap



4 x 17¼ / 12 x 10¾

#### Anchor™ Fiberglass Pins†



5" L x .5" dia.  
Sold Separately

\* Available in Victorian Face Only

\*\* Available in Straight Face Only

†2 Pins per block, sold separately

Wall Innovations By



**ANCHOR™**  
WALL SYSTEMS



#### STRUCTURE BOND™

Structure Bond Foam Adhesive is a one-component, durable and flexible exterior polyurethane adhesive for use in hardscaping projects. Developed for the construction industry, it bonds to block, brick, stone and pavers with precise delivery - no mess, no waste. Ideal for retaining walls and caps. Please refer to page 127 for more information.



# DIAMOND PRO® PS QUARRIED FACE

## RETAINING WALLS

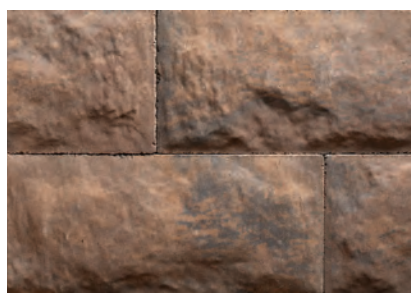


Inspired by the look of natural, unearthed stone, the Diamond Pro PS Quarried Face pairs the time-tested strength of a Diamond Pro® retaining wall system with the installation ease of a pin locator.



Bella

## AVAILABLE COLORS



Bella



Sable Blend



Silex Blend

## SHAPES & SIZES

### Block



8 x 18 x 12

### Corner



8 x 18 x 9

### 4" Universal Cap



4 x 17¼ / 12 x 10¾

### Anchor™ Fiberglass Pins†



5" L x .05" dia.  
Sold Separately

†2 Pins per block, sold separately

Wall Innovations By



**ANCHOR™**  
WALL SYSTEMS



### STRUCTURE BOND™

Structure Bond Foam Adhesive is a one-component, durable and flexible exterior polyurethane adhesive for use in hardscaping projects. Developed for the construction industry, it bonds to block, brick, stone and pavers with precise delivery - no mess, no waste. Ideal for retaining walls and caps. Please refer to page 127 for more information.

BELGARD.COM | 877-235-4273





# TANDEM® WALL

---

The Tandem family of products is a revolutionary platform that showcases the stone-like aesthetic that homeowners prefer while offering job site efficiencies contractors need. A complete system, with a Column Kit and Modular Grid, Tandem provides versatility to complement any outdoor living space.







## WALLS

The **Tandem® Wall** system designed by Belgard® is an innovative, versatile system that can be used to create attractive, curved or straight retaining and freestanding landscape walls. Great for use in a wide range of residential and light commercial hardscape projects.



## COLUMNS

Building columns is easy with the Tandem system. Add a finishing touch to a wall, create a grand entry at the end of a driveway or dress-up an existing deck post with a stone-faced column. Ask your Belgard Representative about our **Tandem® Column Kit** (page 102) with Column Grids, Connectors and Veneer Units in one convenient package.

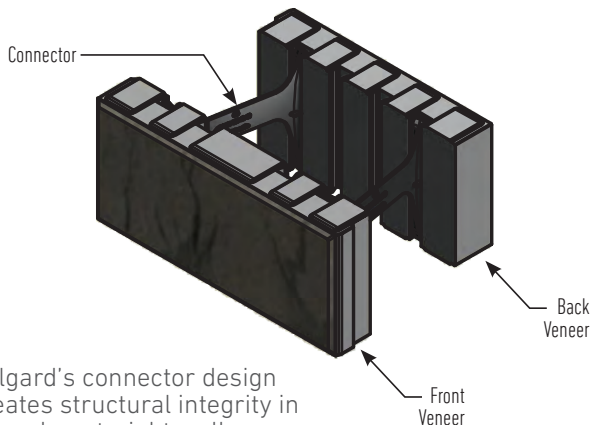


## MODULAR GRID

**Tandem® Modular Grid** (page 103) is a revolutionary system that makes it easy to construct outdoor living elements. Use steel Column Grids and heavy-duty connectors to construct virtually any structure up to 7 ft tall including privacy walls, outdoor benches, kitchens and much more.



## HOW IT WORKS



Belgard's connector design creates structural integrity in curved or straight walls.



## BENEFITS BY THE NUMBERS:

- Meets additional ASTM standards (C-1372 & C-1262)
- Freestanding walls up to 28"
- Exceeds 5,000 PSI compressive strength concrete
- Engineered 90° corners
- Gravity walls up to 3 ft
- Reinforced walls up to 7 ft



# ASHLAR TANDEM™

## FREESTANDING / RETAINING WALLS



Ashlar Tandem provides the look and feel of chiseled stone with the easy installation of the Tandem Wall platform. Virtual joints and multiple sizes allow for a seamless connection between units.



Silex Blend

### AVAILABLE COLORS



Amaretto



Bella



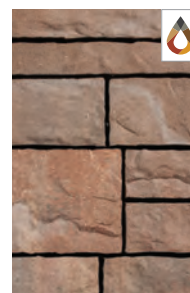
Danville Blend



Sable Blend



Silex Blend



Summer Hill  
with TrueColor™

### SHAPES & SIZES

Unit 1



7 x 13 $\frac{2}{3}$  x 3

Unit 2



7 x 15 $\frac{2}{3}$  x 3

Unit 3



7 x 18 x 3

Solid Units 1, 2 & 3



7 x 13 $\frac{2}{3}$  x 3  
7 x 15 $\frac{2}{3}$  x 3  
7 x 18 x 3

Tandem® Cap



15 x 24 x 3 $\frac{1}{4}$

8" Connecting  
Member



Ashlar 1-6 come mixed on one pallet.



U Start Base Block®  
sold separately.  
See page 104 for full  
product information.





Bella



# LAFITT TANDEM™

## FREESTANDING / RETAINING WALLS



Lafitt Tandem provides the look and feel of chiseled stone with the easy installation of the Tandem Wall platform. Enjoy a simple, modular look or mix with other Tandem units to add variety to your outdoor living space.



Silex Blend

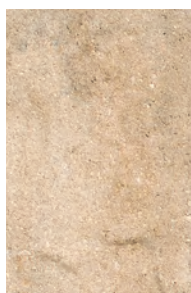
### AVAILABLE COLORS



Amaretto



Bella



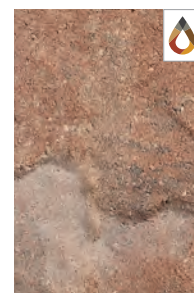
Danville Blend



Sable Blend



Silex Blend



Summer Hill  
with TrueColor™

### SHAPES & SIZES

Unit 1



7 x 13<sup>3</sup>/<sub>16</sub> x 2<sup>5</sup>/<sub>8</sub>

Unit 2



7 x 15<sup>13</sup>/<sub>16</sub> x 2<sup>5</sup>/<sub>8</sub>

Unit 3



7 x 18<sup>7</sup>/<sub>16</sub> x 2<sup>5</sup>/<sub>8</sub>

Lafitt Tandem Units 1, 2, & 3 come mixed on one pallet.

Tandem®  
Cap Unit



15 x 24 x 3<sup>1</sup>/<sub>4</sub>

8" Connecting  
Member



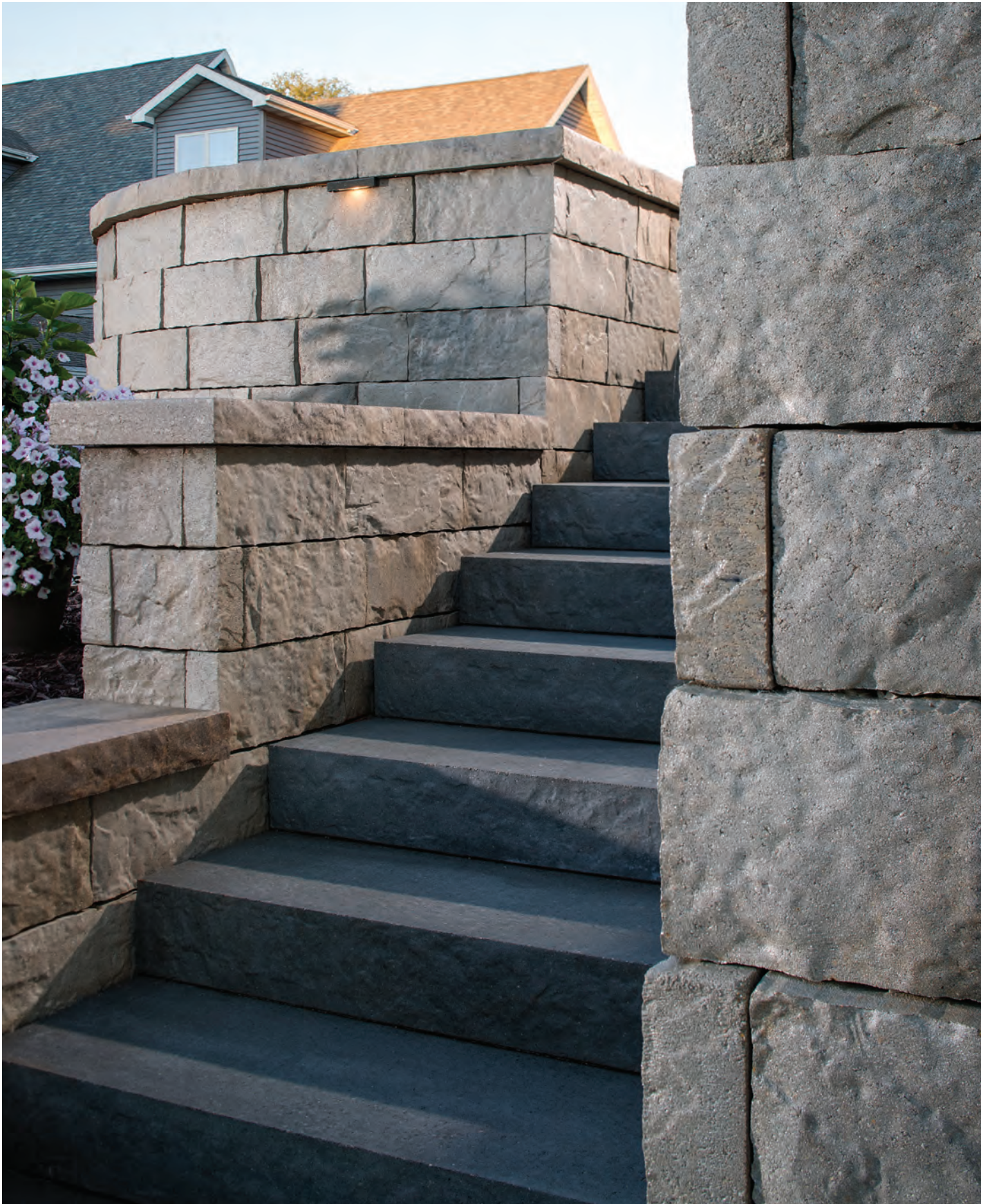
U Start Base Block®



12 x 18<sup>7</sup>/<sub>16</sub> x 3<sup>1</sup>/<sub>2</sub>

Sold separately.  
See page 104  
for full product  
information.





Silex Blend



# TANDEM® COLUMN KIT



Tandem Column Kit is an innovative, versatile system that can be used to create attractive, easy to install and durable columns. Great for use in residential and light commercial hardscape projects.



1 Start with Column Grid



2 Use connector to attach Tandem Veneers to grid



3 Repeat step 2 and fill with 3/4" crushed rock until column is complete



See the installation video at [Belgard.com/Tandem](http://Belgard.com/Tandem)

## AVAILABLE COLORS



Amaretto



Bella



Danville Blend



Sable Blend



Silex Blend



Summer Hill with TrueColor™

## SHAPES & SIZES

Tandem Column Kit includes 2 Steel Cages, 2 Bags of clips, & Tandem Units



Ashlar Tandem™

OR



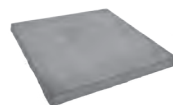
Lafitt Tandem™



Column Grid  
Height 42"



Connector



Tandem Cap  
24 x 24 x 3 1/4  
(Sold Separately)



U Start Base Block®  
12 x 18 1/16 x 3 1/2  
(Sold Separately)



Structure Bond™  
Recommended Adhesive  
by Techniseal®  
(Sold Separately)

Ashlar Tandem and Lafitt Tandem units come mixed on a pallet. See pages 98 and 100 for full product information.



# TANDEM® MODULAR GRID



Construct virtually any design up to 7' tall by simply attaching the grids to a wooden structure and connecting the veneers. Build an outdoor kitchen, skirt a deck, hide utilities, construct seat walls... the possibilities are endless.



1 Build your wooden frame



2 Attach your modular grid



3 Attach Tandem Veneer with Connector



4 Finish with Tandem Cap Unit

## AVAILABLE COLORS



Amaretto



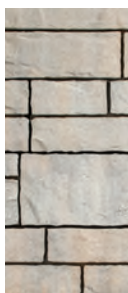
Bella



Danville Blend



Sable Blend



Silex Blend



Summer Hill with TrueColor™

## TANDEM VENEER UNITS\*



Ashlar Tandem™

OR



Lafitt Tandem™

## CONNECTOR

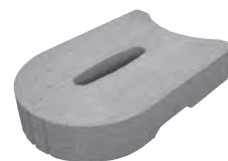


## MODULAR GRID

Vertical or Horizontal Application



## U START BASE BLOCK®



Sold separately. See page 104 for full product information.

\*Tandem Veneer units available in three sizes. Units only available in 7" height. Ashlar Tandem and Lafitt Tandem units come mixed on a pallet. See pages 98 and 100 for full product information.



# U START BASE BLOCK<sup>®</sup>

## WALL ACCESSORY



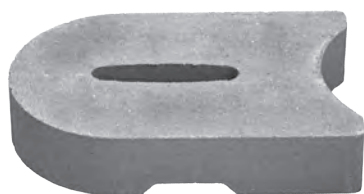
One of Belgard's latest innovations, U Start Base Block is a universal base course for landscaping walls that promotes cost savings and installation time efficiency.



Diamond 9D in Flash Brown

## SHAPES & SIZES

Can be used with all available wall blocks and veneers.



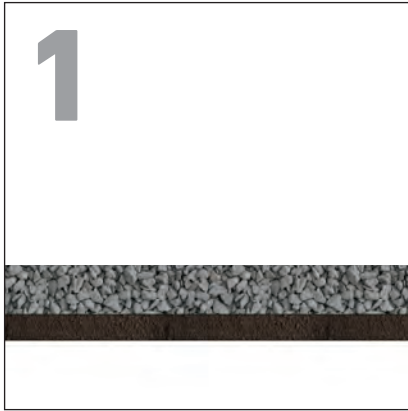
Base Block  
18<sup>7</sup>/<sub>16</sub> x 12 x 3<sup>1</sup>/<sub>2</sub>

\*Note: U Start Base Block actual coverage length is 16<sup>11</sup>/<sub>16</sub>"

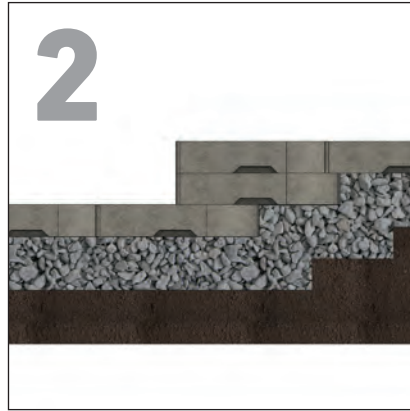


Base Block with Ashlar Tandem™ Wall

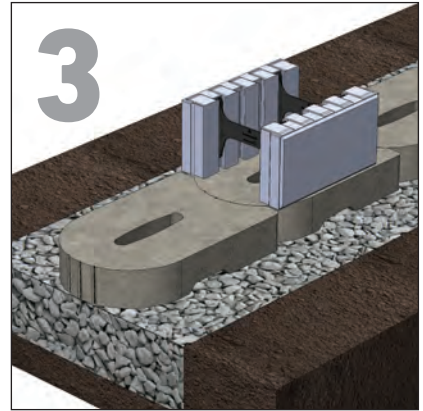




Prep Site



Install Base Course



Install the Wall



Ashlar Tandem in Bella



# WESTON STONE™

## FREESTANDING / RETAINING WALLS



The flexibility of Weston Stone is unmatched. With the look of natural tumbled stone, this double-sided wall is ideal for garden walls, pillars, outdoor kitchens, planters and fire features.



Bella

## AVAILABLE COLORS



Amaretto



Bella



Sable Blend

## SHAPES & SIZES

### Universal



4 x 12 x 8



### STRUCTURE BOND™

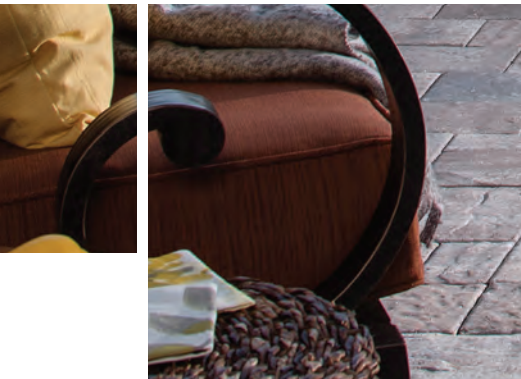
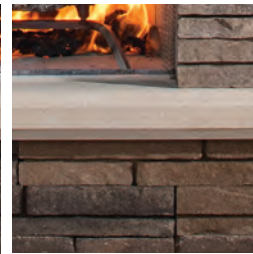
Structure Bond Foam Adhesive is a one-component, durable and flexible exterior polyurethane adhesive for use in hardscaping projects. Developed for the construction industry, it bonds to block, brick, stone and pavers with precise delivery - no mess, no waste. Ideal for retaining walls and caps. Please refer to page 127 for more information.





Bella







# FIRE FEATURES

## FIREPLACES OUTDOOR KITCHENS FIRE PITS

Outdoor focal points don't have to be a hassle. Our pre-assembled modular fireplaces and outdoor kitchens take the guesswork out of assembly and our fire pit kits make relaxation simple and installation easy.

You cozy up.

## WE'LL PAVE THE WAY



*Pictured: Bristol Series Fireplace, Hearth & Wood Boxes  
Opposite: Bordeaux Series Fireplace & Wood Boxes*



# OUTDOOR FIRE FEATURES AND KITCHENS

Browse our outdoor kitchen collections and fireplace kits to find the right centerpiece for your al fresco experience. Our line of pre-assembled modular Elements™ not only carry our standard warranty, but also can be installed within hours to any project.



## BRISTOL™ SERIES

A beautiful combination of tumbled block with Arbel® and Urbana® accents, Bristol's rustic look blends well with virtually any landscape.



## BRIGHTON™ SERIES

Featuring the same 36" firebox as the Bristol Series, plus a built-in hearth and metal accent, Brighton is a beautiful option.



## BORDEAUX™ SERIES

A timeless stackstone design that allows the fireplace, the grill island, or the brick oven to become the focal point of your outdoor space.



Shop Belgard Outdoor Kitchen and Fire Features at [Belgard.com/Elements](https://Belgard.com/Elements)



## BRICK OVENS

Inspired by traditional oven designs first used over four thousand years ago. The secret is our authentic, low-height Neapolitan dome design. The design creates high, even temperatures for balanced cooking and genuine wood-fired taste.

Available in Bordeaux™ and Bristol™ Series.

NOTE: All our Fireplaces, Brick Ovens, and Fire Pits come standard as wood-burning units. However, our fireplaces and fire pits can be retro-fitted for gas burning log sets and burners. Our brick ovens are wood burning units only. Please contact us for more details 877-235-4273. Also, be sure to check with your local municipality for any codes that may affect your installation.



Bristol™ Series Brick Oven



## WESTON STONE™ FIRE PIT KIT

Belgard's Weston Stone™ Universal Fire Pit Kit installs quickly and offers the clean and contemporary look of tumbled stone. Available in three popular color blends developed to complement most Belgard paving stone and retaining wall types. Available in square kits only.

## BORDEAUX GRILL ISLAND

Featuring a Napoleon gas grill and stainless door set, Belgard's Bordeaux Grill Island will have you grilling in no time!





# BORDEAUX™ SERIES

## FIREPLACE

2'7"D x 4'3"W x 7'8"H

Our Bordeaux Series features a Lamina Stone for the body, and eye catching Cordova Stone Coping and Accents in either Midnight or Buff colors.



Sienna (Body), Midnight (Accent)



Fireplace Wood Boxes

2'1¼"D x 3'3"W x 3'1"H  
per box

Sold as a pair.



Grill Island

2'6"D x 5'11"W x 3'5"H

Includes Napoleon Grill and Door Set. Grill is available in propane or natural gas. Must be specified when placing order.



Brick Oven

42½"D x 53¼"W x 92"H



# BRISTOL™ SERIES

## FIREPLACE

3'D x 5'W x 9'3"H

Our Bristol Series features Weston Stone for the body, with accents of Urbana and Mega-Arbel. It's available in either brown or gray tones.



Gascony Tan (Body), Ashbury Haze (Accent)



Fireplace Wood Boxes

2'4"D x 3'W x 3'3"H  
per box

Sold as a pair.



Fireplace Hearth

2'D x 5'W x 11"H



Brick Oven

4'D x 4'W x 8'5"H



Grill Island

3'D x 6'4"W x 4'4"H

Includes Napoleon Grill and Door Set. Grill is available in propane or natural gas. Must be specified when placing order



# BRIGHTON™ SERIES

## FIREPLACE

3'4"D x 4'4"W x 8'4"H

Our Brighton Series features Weston Stone for the body, with Urbana Accents. It's available in either brown or gray tones. Includes wrought metal accent.



Cotswold Mist (Body), Brookstone Slate (Accent)



Fireplace Wood Boxes  
2'4"D x 2'8"W x 2'11"H  
per box  
Sold as a pair.



Fireplace  
3'4"D x 4'8"W x 8'4"H





Gascony Tan (Body), Ashbury Haze (Accent)



# WESTON STONE™ FIRE PIT KIT



For those who prefer a cleaner, more contemporary look, Belgard's Weston Stone Fire Pit Kit offers a pleasing visual alternative to some of our more textured products.



Bella

## AVAILABLE COLORS



Amaretto



Bella



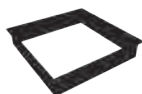
Sable Blend

## SHAPES & SIZES

### Square Fire Pit



4 x 8 x 12



*Square Fire Pit:  
Outside is 44"  
Stacks up to 4 rows high,  
12 pieces to each row.  
48 pieces required to  
complete kit.  
Metal insert sold separately.*



### STRUCTURE BOND™

Structure Bond Foam Adhesive is a one-component, durable and flexible exterior polyurethane adhesive for use in hardscaping projects. Developed for the construction industry, it bonds to block, brick, stone and pavers with precise delivery - no mess, no waste. Ideal for retaining walls and caps. Please refer to page 127 for more information.



# NEW BROOKSHIRE™ WALL FIRE PIT KIT



Enjoy cool evenings with the rustic stone-textured Brookshire Wall Fire Pit. Listening to the crackle of the fire and enjoying the aroma that only a wood-burning fire pit can provide.



Silex Blend

## AVAILABLE COLORS



Bella



Sable Blend



Silex Blend

## SHAPES & SIZES

### Square Fire Pit Kit



3x13/7x12



*Ring and Grate  
sold separately.  
5 courses high, 12 pieces  
to each course.  
60 pieces required to  
complete fire pit.*



### STRUCTURE BOND™

Structure Bond Foam Adhesive is a one-component, durable and flexible exterior polyurethane adhesive for use in hardscaping projects. Developed for the construction industry, it bonds to block, brick, stone and pavers with precise delivery - no mess, no waste. Ideal for retaining walls and caps. Please refer to page 127 for more information.





## EDGERS

**120**

Anglia Edger®

## CURBS

**121**

Country Manor  
Curb®

## STEPS

**122**

Landings™ Step  
Unit

## COPING

**123**

Marina™ Coping



# ACCESSORIES

## **COPING & CAPS EDGERS & CURBS STEPS**

Whether chiseled and brawny or smooth and precise, it's the finishing touches that make the final statement. You craft the message.

## **WE'LL PAVE THE WAY**



*Pictured: Anglia Edger*

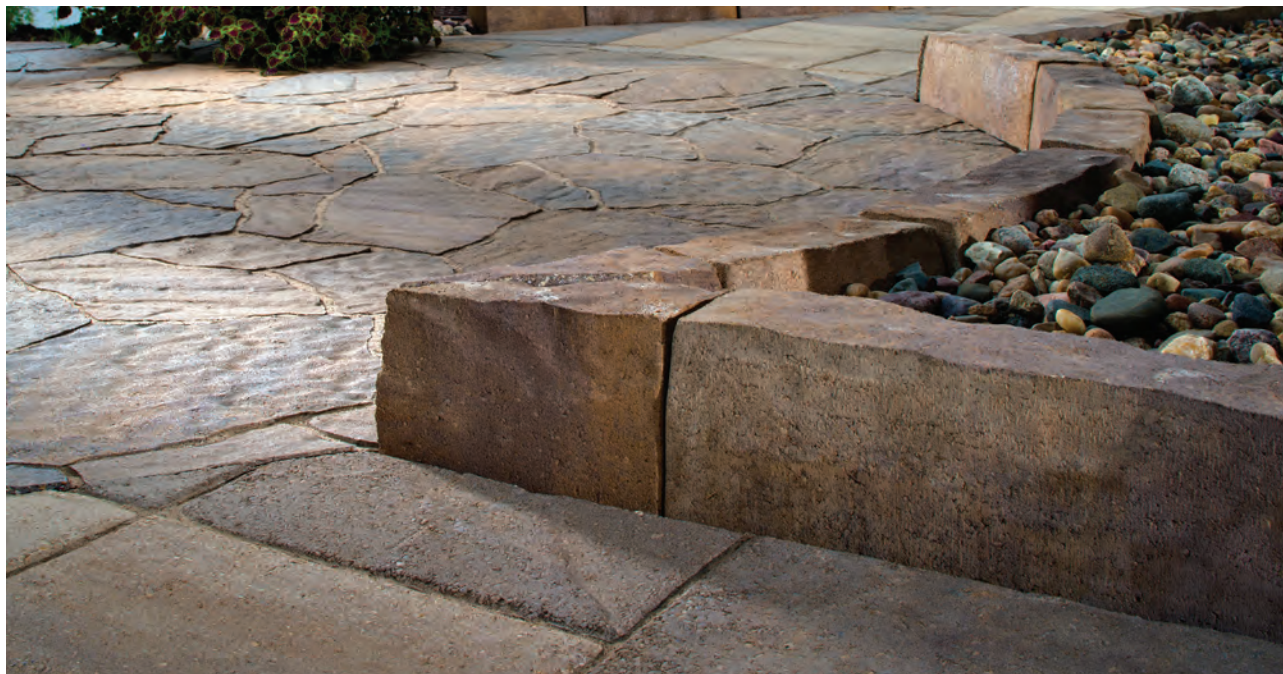


# ANGLIA EDGER®

## EDGERS



The Anglia Edger features a chiseled finish and tapered edges to provide the perfect complement to driveways, patios, walkways and flower beds. Larger units allow for a reduced number of joints.



Bella

## AVAILABLE COLORS



Bella



Bella Antiqued



Sable Blend



Sable Blend  
Antiqued



Silex Blend



Silex Blend  
Antiqued

## SHAPES & SIZES

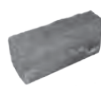
### 4-Piece Modular



8 x 17 $\frac{1}{8}$  x 4 $\frac{1}{2}$



8 x 15 $\frac{1}{2}$  x 4 $\frac{1}{2}$



8 x 10 $\frac{1}{2}$  x 4 $\frac{1}{2}$



8 x 7 $\frac{7}{8}$  x 4 $\frac{1}{2}$



# COUNTRY MANOR® CURB

CURB



Country Manor Curb provides the performance of an edge restraint with the look and feel of natural hewn stone, making it the perfect complement to driveways, patios, walkways and flower beds.



Flash Brown Blend

## AVAILABLE COLORS



Flash Brown Blend



Sable Blend

## SHAPES & SIZES

Curb



4 x 8 x 12



# LANDINGS™ STEP UNIT

## STEPS



With the look of quarried limestone, the Landings Step Unit can be used as a standalone feature or integrated into a hardscape project to add grand style to landscape level changes.



Sable Blend

### AVAILABLE COLORS

Also available in Charcoal



Bella



Natural



Sable Blend



Silex Blend



Summer Hill

### SHAPES & SIZES

Step Unit



6 x 48 x 18

Wall Innovations By





# MARINA™ COPING

## COPING



Marina Coping features a smooth surface and can be used as a finishing accent for an array of outdoor living features, including pools, steps, seat walls, outdoor kitchen counters and foot ledges, and more.



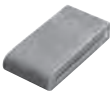
Silex Blend

### AVAILABLE COLORS



### SHAPES & SIZES

Coping Unit



5<sup>15</sup>/<sub>16</sub> x 11<sup>13</sup>/<sub>16</sub> x 2<sup>3</sup>/<sub>8</sub>





# PAVER CARE

## PROTECT YOUR INVESTMENT

Belgard Products are designed to last for generations. Many homeowners choose to further protect and beautify their investment by applying a protective sealer. Adding a sealer can enhance the beauty of a project by highlighting the color and texture of the surface. It will also offer protection from stains like oil, grease or other accidental leaks.

*Techniseal Protector for Concrete Pavers (Top-Bottom): Natural Look Matte Finish, Clear Look Semi-Gloss Finish, Color Boost Matte Finish, Wet Look Gloss Finish*



# THE ULTIMATE PROTECTION SYSTEM

Techniseal's 3-step treatment system guarantees the best results. Remove stains with a specially formulated Stain Remover, prepare the surface with Paver Prep, then apply a Protector that delivers the look you want.

## 1 PREP

### STAIN REMOVERS



## 2 CLEAN

### CLEANERS

- Dislodges efflorescence and ground-in dirt
- Prepares pavers prior to protector application
- Brightens paver color



## 3 PROTECT



### SAME FINISHES, HIGHER STANDARDS

Our versatile, new sealers have been formulated for easier product selection and application.



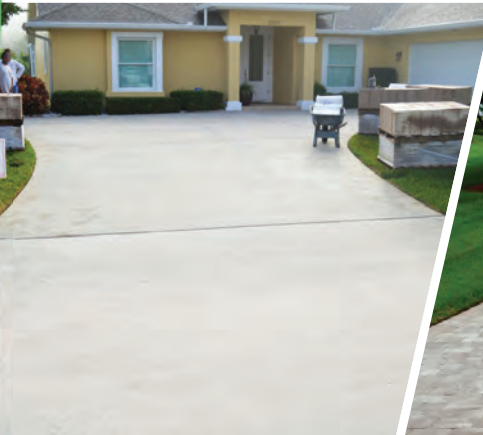
### NULOOK® TINTED PROTECTOR

- Colors pavers
- Translucent
- Water-based stain guard



# DRI*B*BOND™

## CHANGING THE WAY YOU OVERLAY



**BEFORE**



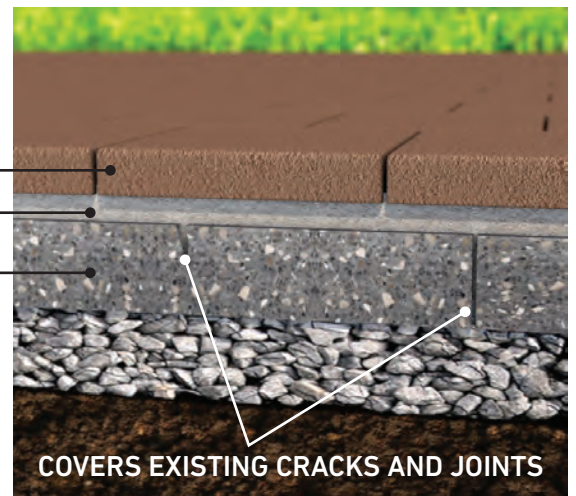
**AFTER**

## No More Concrete Removal!

With DriBond™, there is no need to remove the existing concrete substrate, which is a costly and time-consuming process. DriBond™ can be installed quickly and easily over most sound concrete surfaces.

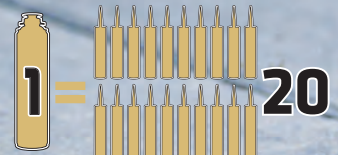
- Ideal for thin paver overlays
- Dry application
- No mixing - ready to use
- Reduces installation time

**PAVERS**  
**DRI*B*BOND**  
**EXISTING**  
**CONCRETE**





# NO MESS. NO WASTE.



**STRUCTUREBOND™ IS AN INNOVATIVE SUPER-STRENGTH FOAM ADHESIVE THAT BONDS A WIDE RANGE OF CONSTRUCTION MATERIALS.**

Made from high-quality modified polyurethanes, StructureBond's adhesive strength is unmatched among all types of polyurethane adhesives.

StructureBond's Gun allows for a precise adhesive delivery with a single pull of the trigger. No pumping, cutting or puncturing of cartridge nozzles.

**VISIT [TECHNISEAL.COM](http://TECHNISEAL.COM) FOR MORE DETAILS.**





# 1 PREP

## EZ BASE® PANEL BASE SYSTEM



- Saves up to 8 inches of excavation
- Each panel replaces up to 250 lbs of base aggregates
- Ideal for porcelain tile installation

## PAVER EDGING

PREVENTS MOVEMENT & DAMAGE TO PAVER INSTALLATIONS



**RIGID**  
8-FT SECTIONS



**COIL**  
40-FT COIL

# 2 SET



## STRUCTURE BOND™ FOAM ADHESIVE

- Application gun also included



## DRIBOND™ DRY MUDSET

- Applied directly to existing concrete slab
- Ideal for thin paver overlays installation



## BORDERBOND™ FORTIFIER FOR BORDER PAVERS

- No Mixing required
- Enhances the strength of DriBond

# 3 SAND



## HP NEXTGEL™ JOINTING SAND

- High-performance formula
- For joints up to 4"
- Haze and dust free
- Super fast wetting
- Rapid set
- Prevents erosion and weeds



## NEW SMARTSAND™ POLYMERIC SAND WITH NEXTGEL TECHNOLOGY

- Ideal for interlocking pavers
- For joints up to 1"
- Easy sweep - No haze
- Fast wetting
- Rapid set
- Prevents erosion and weeds



# SELECTING A CONTRACTOR



A hardscape project is an important investment in your home and selecting the right contractor is a critical decision. Don't be afraid to ask a lot of questions. It's important that you get to know your contractor so that you can work together as a team to create your ideal outdoor living space.

## WHAT TO ASK

### Are you certified?

Inquire about specialized certifications and training from organizations like the Interlocking Concrete Paver Institute (ICPI).

*All Belgard® Contractors are required to have at least one team member who is ICPI certified and must meet annual requirements to maintain the company's status.*

### Are you insured?

It's important to hire a contractor who can provide proof of insurance and is able to guarantee their work for a period of at least three years after the installation.

### Can I get a reference?

Ask for customer references and to see photos of past projects, both for design ideas and to get a sense of the contractor's level of creativity, expertise and work ethic. Ask for an address or two and check out the workmanship up close, with the homeowner's permission of course.

### What isn't covered in your estimate?

Determine upfront which aspects of the project the contractor can handle. Will their team manage landscaping, plumbing, irrigation and lighting or will you be expected to handle this separately?

### What's the schedule?

Be sure to get a complete understanding of payment terms, estimated start date and turn-around time.

## CHECKLIST FOR CONTRACTOR:

- |  |   |
|--|---|
| <input type="checkbox"/> Industry Certification (ICPI, NCMA, SRW)                  | <input type="checkbox"/> Work Schedule          |
| <input type="checkbox"/> Proof of Insurance  | <input type="checkbox"/> Price Estimate         |
| <input type="checkbox"/> Workmanship Guarantee (1-3 year minimum)                  | <input type="checkbox"/> Scope of Work/Contract |
| <input type="checkbox"/> Business License/ Contractor's license (where applicable) | <input type="checkbox"/> Referrals              |



## INSTALL WITH A BELGARD PREFERRED CONTRACTOR

Our network of Belgard Contractors are ICPI\* trained to deliver superior craftsmanship. **Find a contractor or dealer:**  
**[Belgard.com/find-contractor](https://belgard.com/find-contractor)**





**TRU-SCAPES**



PL-100

**THE ONLY LOW VOLTAGE PILLAR LIGHT ON THE MARKET WITH ALL INSTALL COMPONENTS IN THE BOX!**



PL-101

#### ITEMS INCLUDED

Mounting Base  
Drill Template  
Anchor Kit  
Masonry Drill Bit  
LED Lamp  
Wire Nuts

## TRANSFORMERS, TIMERS AND PHOTOCELLS



75 watt Stainless Steel Transformer with Timer and plug for optional photocell

**TS-TSST-75**

150 and 300 watt Stainless Steel Transformer available with plugs for optional timer and/or photocell

**TS-TSSP-300 | TS-TSSP-150**



Tru-Scapes Digital Timer

**TS-T100-D**



Plug-in Photocells available with 9" and 15' leads

**TS-TPHOT09 | TS-TPHOT15**



Bluetooth controlled Transformer with astronomic timer, Anodized Aluminum

150W 12V **TS-TAAB150**

300W 12V **TS-TAAB300**





## ACCENT & WELL LIGHTS

Low voltage landscape accent and well lights are heavy duty brass fixtures used to highlight landscape features such as trees, shrubs, walls, statues and water features. LED lamp, ground stake and waterproof wire nuts included. Accent lights are available in Black or Bronze finish.



TS-B102



TS-B103



TS-B105



TS-B203



TS-B201

## PATH LIGHTS

Our professional grade LED low voltage landscape path lights are a solid heavy duty brass fixture used to highlight walkways, pathways, and themed areas. Wire nuts, ground stakes and lamps included.



TS-B301



TS-B302



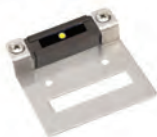
TS-B304



TS-B306

## HARDSCAPE LIGHTS

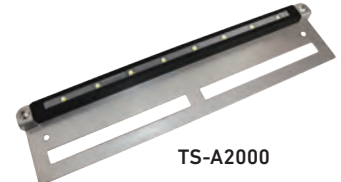
Hardscape lights are a durable, low profile way to highlight walls, steps and outdoor living areas. This integrated LED fixture includes a Stainless Steel mounting plate and waterproof wire nuts. Fixture is available in three colors; Black, Bronze and Gray.



TS-A500



TS-A1000



TS-A2000



# DREAMS ON DEMAND

Step into your dream backyard before construction begins  
with Belgard Design Studio



Belgard is your resource for outdoor living inspiration, planning and installation. From charming walkways and welcoming patios to gourmet outdoor kitchens – the possibilities are endless. Let us help you visualize a new outdoor space using virtual reality.

**REVIEW SAMPLE CONTENT, THEN REQUEST A CUSTOM DESIGN FOR YOUR HOME!  
VISIT [BELGARD.COM/VR](https://www.belgard.com/vr)**



# YOUR PROJECT STARTS HERE

Ready to take the next step?  
Belgard provides tools to easily  
kick off your next project



## BELGARD® WILL IMPROVE THE BEAUTY AND VALUE OF YOUR HOME.

But like any construction project, it's necessary to have as much information as possible before you begin the process. With that in mind, we created a project planning guide dedicated to helping you make the best decisions and understand what to expect before you get started with your project.

**GET YOUR PROJECT  
PLANNING GUIDE AT  
[BELGARD.COM/PLANNER](http://BELGARD.COM/PLANNER)**

## PROJECT CONSIDERATIONS

- ❑ The general project should be conducted in phases, which include: demolition, site preparation, base material installation, bedding sand installation, hardscape installation, polymeric sand installation, additional paver cleaning and sealing.
- ❑ The timeline for your hardscaping project depends on several factors including the **size and scale** of the project, **permits needed** (which vary by municipality), and the acceptance of any community organizations, such as homeowner associations or architectural review boards.
- ❑ All outdoor projects are subject to weather conditions so there could always be delays.
- ❑ Spring and summer are the busiest periods for contractors, so **start your planning during the winter months** or consider scheduling your project in slower periods.
- ❑ **Confirm all the work you'd like done is contracted and scheduled up front.** Adding additional features will delay the schedule and add to the total cost.
- ❑ Check with your contractor to ensure that all items being installed are readily available or match your timeframe.
- ❑ Be sure to **discuss with your neighbors** any construction phases that might be disruptive so that you can communicate that information to them as needed.
- ❑ If you have a large project and would like to phase out construction over time, be sure to **plan the entire design** before you get started so that you can plan for any electrical, plumbing, drainage or landscaping needs.
- ❑ Consider building your backyard before any projects in the front yard to avoid damaging your front yard.
- ❑ When your project is finished, **walk through it with your contractor** to ensure the quality of the install, and **ensure you have receipts for materials / labor** and have registered your warranty.
- ❑ Always take into consideration the next step of the project: What does the landscaping look like? Do you need to schedule the contractor to seal the pavers? Plan ahead to make sure you finalize your project and can enjoy it for years to come.



## TIMELINE -

### Planning the project

#### PHASE 1: 4-6 weeks


- ❑ Consider how you will use the space and your budget.
- ❑ Examine styles and colors for your house or landscape.
- ❑ Get inspiration online.
- ❑ Research approval requirements from municipality or HOA.
- ❑ Set a budget.

### Installation

#### PHASE 3: 2-12 weeks

- ❑ Time of the installation will depend on the scope of the project.
- ❑ Check with the contractor to ensure the materials ordered have arrived and are accurate.
- ❑ Connect with your contractor to ensure it is properly maintained.





# MAKE YOUR DREAMS A REALITY

with Belgard Preferred Payment



With the Belgard® Preferred Payment program, you can complete your outdoor project in just a few weeks, instead of phasing it out over several months or years.

Available only through **Belgard Contractors or Dealers**, Preferred Payment offers same-as-cash financing that allows you to start your project immediately.

There are often construction economies that can be achieved by doing the entire project at once, **which could save you both money and time.**

Plus, you get to start enjoying your dream outdoor living space much sooner!

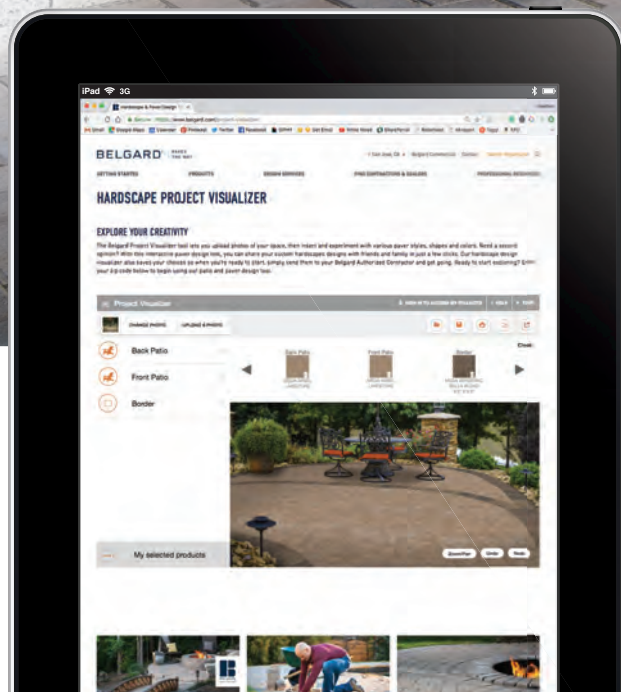
**TO LEARN MORE,  
VISIT [BELGARD.COM/BPP](http://BELGARD.COM/BPP)**

## **BENEFITS OF BELGARD FINANCING INCLUDE:**

- No payments or interest on approved credit
- Quick, easy and safe toll-free loan-by-phone application process
- No paperwork
- A credit decision in about 10 minutes
- No application fees, no closing costs and no prepayment penalties



# VISUALIZE YOUR PROJECT

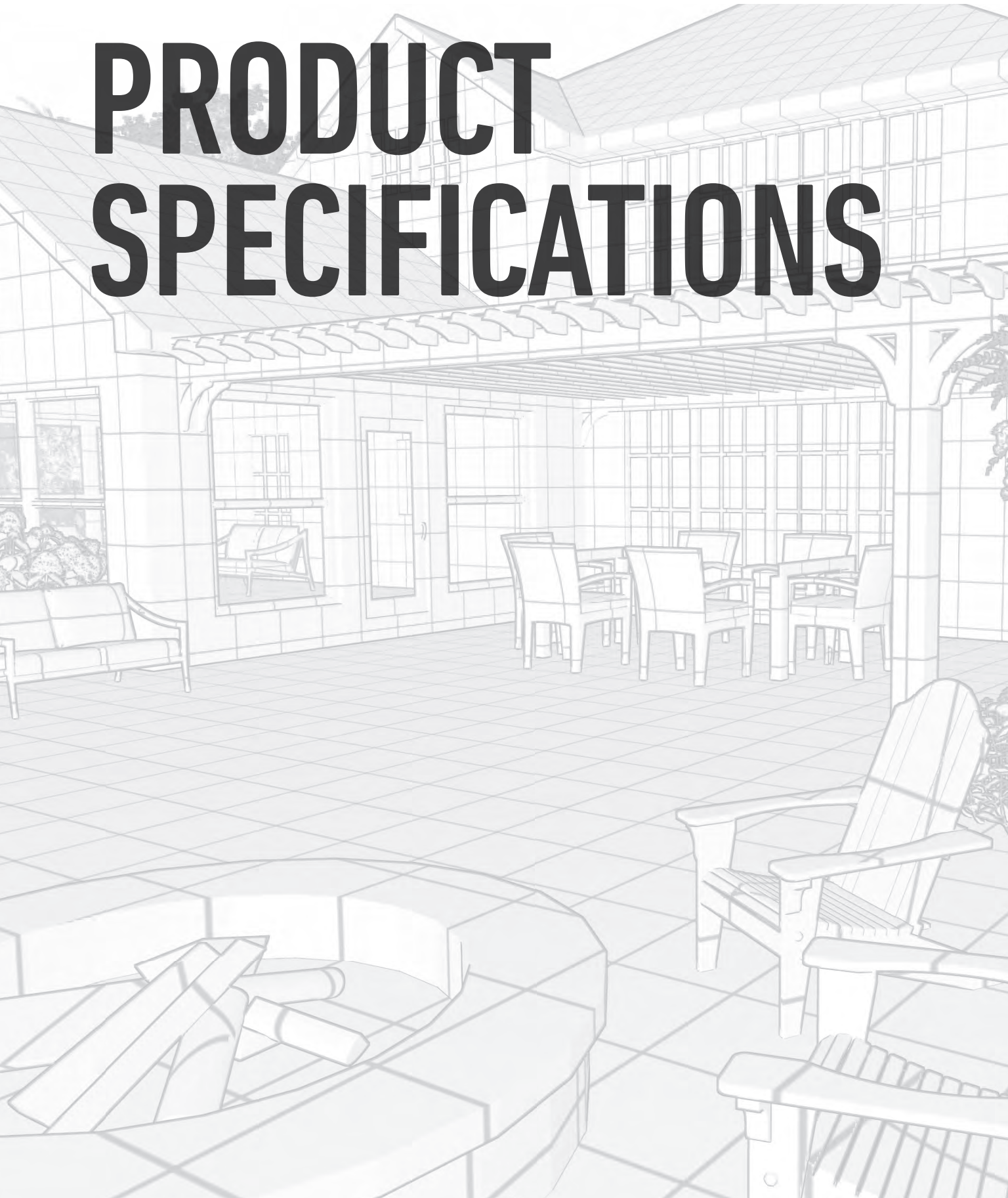


Belgard's online Project Visualizer allows you to be your own hardscape designer. Choose from our image library or upload your own photo to experiment with paver styles and colors and explore an infinite number of design possibilities.

**READY TO "VISUALIZE" YOUR BACKYARD MAKEOVER?**  
**VISIT [BELGARD.COM/SEEIT](https://www.belgard.com/seeit)**



# PRODUCT SPECIFICATIONS







## EASY REFERENCE

---

### **AT BELGARD®, WE TAKE OUR ROLE AS INDUSTRY LEADERS SERIOUSLY.**

And every year, we strive to improve our product and service offerings by dedicating more than 20,000 hours to research and development. Our overarching goal is to continue to find new and exciting ways to create beautiful outdoor spaces while maintaining incredibly high standards for product quality and performance.

The following section provides specifications, square footage and pallet information to make planning your project easier.

**TO DOWNLOAD OUR COMPREHENSIVE TECHNICAL GUIDES, VISIT [BELGARD.COM/RESOURCE-GUIDE](https://www.belgard.com/resource-guide)**



# PAVER SPECIFICATIONS

All pavers sold as full pallet only.

PRODUCT NAME/ DIMENSIONS	NUMBER OF LAYERS	PIECES/ PALLET	SQFT/ PALLET	WEIGHT/ PALLET (LBS)
<b>AGILINA PLANK 5" WITH TRUECOLOR</b>				
5 x 11 <sup>13</sup> / <sub>16</sub> x 3 <sup>1</sup> / <sub>8</sub>		56		
5 x 15 <sup>3</sup> / <sub>4</sub> x 3 <sup>1</sup> / <sub>8</sub>		56		
5 x 19 <sup>1</sup> / <sub>16</sub> x 3 <sup>1</sup> / <sub>8</sub>		56		
Total	8	168	91.62	3435

<b>AGILINA PLANK 7" WITH TRUECOLOR</b>				
7 <sup>1</sup> / <sub>2</sub> x 11 <sup>13</sup> / <sub>16</sub> x 3 <sup>1</sup> / <sub>8</sub>		32		
7 <sup>1</sup> / <sub>2</sub> x 15 <sup>3</sup> / <sub>4</sub> x 3 <sup>1</sup> / <sub>8</sub>		32		
7 <sup>1</sup> / <sub>2</sub> x 19 <sup>1</sup> / <sub>16</sub> x 3 <sup>1</sup> / <sub>8</sub>		32		
Total	8	96	78.53	2945

<b>CATALINA GRANA 3-PIECE WITH TRUECOLOR</b>				
6 x 12 x 2 <sup>3</sup> / <sub>8</sub>		60		
9 x 12 x 2 <sup>3</sup> / <sub>8</sub>		40		
12 x 12 x 2 <sup>3</sup> / <sub>8</sub>		60		
Total	10	160	120	3388

<b>CATALINA SLATE 3-PIECE WITH TRUECOLOR</b>				
6 x 12 x 2 <sup>3</sup> / <sub>8</sub>		60		
9 x 12 x 2 <sup>3</sup> / <sub>8</sub>		40		
12 x 12 x 2 <sup>3</sup> / <sub>8</sub>		60		
Total	10	160	120	3388

<b>COUNTRY MANOR PAVER SQUARE</b>				
6 <sup>1</sup> / <sub>4</sub> x 6 <sup>1</sup> / <sub>4</sub> x 2 <sup>3</sup> / <sub>8</sub>	10	420	116	3340

<b>COUNTRY MANOR PAVER LARGE RECTANGLE</b>				
6 <sup>1</sup> / <sub>4</sub> x 9 <sup>3</sup> / <sub>8</sub> x 2 <sup>3</sup> / <sub>8</sub>	10	300	124	3460

<b>HOLLAND STONE 60MM (EASTON)</b>				
3 <sup>15</sup> / <sub>16</sub> x 7 <sup>7</sup> / <sub>8</sub> x 2 <sup>3</sup> / <sub>8</sub>	10	540	120	3340

<b>HOLLAND STONE 60MM (FARMINGDALE)</b>				
3 <sup>15</sup> / <sub>16</sub> x 7 <sup>7</sup> / <sub>8</sub> x 2 <sup>3</sup> / <sub>8</sub>	6 bands	540	120	3340

<b>HOLLAND STONE 80MM (SPECIAL ORDER ONLY)</b>				
3 <sup>15</sup> / <sub>16</sub> x 7 <sup>7</sup> / <sub>8</sub> x 3 <sup>1</sup> / <sub>8</sub>			97	3188



## PAVER SPECIFICATIONS (CONT.)

PRODUCT NAME/ DIMENSIONS	NUMBER OF LAYERS	PIECES/ PALLET	SQFT/ PALLET	WEIGHT/ PALLET (LBS)
LAFITT PAVER 3-PIECE MODULAR WITH TRUECOLOR   *SOLD AS FULL PALLET ONLY				
7 $\frac{1}{16}$ x 3 $\frac{3}{16}$ x 2 $\frac{3}{8}$		110		
7 $\frac{1}{16}$ x 7 $\frac{1}{16}$ x 2 $\frac{3}{8}$		121		
7 $\frac{1}{16}$ x 10 $\frac{5}{8}$ x 2 $\frac{3}{8}$		121		
Total	11	352	124.68	3320

LAFITT PAVER 6 X 9 WITH TRUECOLOR				
6 x 9 x 2 $\frac{3}{8}$	10	300	112	3080

LAFITT GRANA SLAB 3-PIECE MODULAR 60MM WITH TRUECOLOR   *SOLD AS FULL PALLET ONLY				
14 $\frac{7}{8}$ x 7 $\frac{3}{8}$ x 2 $\frac{3}{8}$		30		
14 $\frac{7}{8}$ x 14 $\frac{7}{8}$ x 2 $\frac{3}{8}$		30		
14 $\frac{7}{8}$ x 22 $\frac{7}{16}$ x 2 $\frac{3}{8}$		20		
Total	10	80	116.57	2895

LAFITT RUSTIC SLAB 3-PIECE MODULAR 60MM WITH TRUECOLOR   *SOLD AS FULL PALLET ONLY				
14 $\frac{7}{8}$ x 7 $\frac{3}{8}$ x 2 $\frac{3}{8}$		30		
14 $\frac{7}{8}$ x 14 $\frac{7}{8}$ x 2 $\frac{3}{8}$		30		
14 $\frac{7}{8}$ x 22 $\frac{7}{16}$ x 2 $\frac{3}{8}$		20		
Total	10	80	116.57	2895

LEGACY ANCHOR COBBLE				
8 $\frac{5}{8}$ x 6 x 2 $\frac{3}{8}$	5 bands	400	108	2950

LEGACY ANCHOR COBBLE EDGER				
8 $\frac{5}{8}$ x 4 $\frac{1}{4}$ x 2 $\frac{3}{8}$	5 bands	450	114	3078

LONDON COBBLE SQUARE (EASTON)				
6 x 6 x 2 $\frac{3}{8}$	10	480	120	3240

LONDON COBBLE RECTANGLE (EASTON)				
6 x 9 x 2 $\frac{3}{8}$	10	300	112	3024

LONDON COBBLE SQUARE (FARMINGDALE)				
6 x 6 x 2 $\frac{3}{8}$	8 bands	480	120	3240
LONDON COBBLE RECTANGLE (FARMINGDALE)				
6 x 9 x 2 $\frac{3}{8}$	5 bands	300	112	3024



## PAVER SPECIFICATIONS (CONT.)

PRODUCT NAME/ DIMENSIONS	NUMBER OF LAYERS	PIECES/ PALLET	SQFT/ PALLET	WEIGHT/ PALLET (LBS)
<b>MADRIA SLAB LARGE SQUARE</b>				
22½ x 22½ x 2⅜	6	20	83.88	2434

<b>MADRIA SLAB LARGE RECTANGLE</b>				
15 x 30 x 2⅜	9	20	83.97	2436

<b>MEGA-ARBEL PATIO SLAB WITH TRUECOLOR   *SOLD AS FULL PALLET ONLY</b>				
15⅜ x 21 x 2⅜	12	72	104.4	2818

<b>MEGA-ARBEL 80MM *SOLD AS FULL PALLET ONLY</b>				
15⅜ x 21 x 3⅞			77.4	2930

<b>MEGA-LAFITT 3-PIECE MODULAR WITH TRUECOLOR *SOLD AS FULL PALLET ONLY</b>				
10½ x 5¼ x 3⅞				
10½ x 10½ x 3⅞				
10½ x 15¾ x 3⅞				
Total	9	117	92.66	3340

<b>OLD WORLD PAVER 3-PIECE MODULAR *SOLD AS FULL PALLET ONLY</b>				
5⅞ x 7¼ x 3⅞		88		
5⅞ x 10¼ x 3⅞		96		
5⅞ x 12⅜ x 3⅞		72		
Total	8	256	90.27	3250

<b>OLD YORK WITH TRUECOLOR</b>				
3⅞ x 7⅞ x 2⅜	10	540	120	3240

<b>PROVENCE SLAB 3-PIECE MODULAR *SOLD AS FULL PALLET ONLY (SPECIAL ORDER)</b>				
7½ x 15 x 2⅜				
15 x 15 x 2⅜				
15 x 22½ x 2⅜				
Total	10	80	128.26	3722

<b>PROVENCE SLAB LARGE SQUARE (SPECIAL ORDER)</b>				
22½ x 22½ x 2⅜	6	20	83.88	2434

<b>PROVENCE SLAB LARGE RECTANGLE (SPECIAL ORDER)</b>				
15 x 30 x 2⅜	9	20	83.97	2436



## PERMEABLE PAVER SPECIFICATIONS

PRODUCT NAME/ DIMENSIONS	NUMBER OF LAYERS	PIECES/ PALLET	SQFT/ PALLET	WEIGHT/ PALLET (LBS)
<b>AQUA ROC I</b>				
4½ x 9 x 3⅞	8	320	90	3047

<b>ECO DUBLIN 3-PIECE MODULAR *SOLD AS FULL PALLET ONLY</b>				
6⅞ x 3 ⅞ x 3⅞				
6⅞ x 6⅞ x 3⅞				
6⅞ x 10¼ x 3⅞				
Total	8		91.6	3156

<b>TURFSTONE *SOLD AS FULL PALLET ONLY</b>				
15¾ x 23⅝ x 3⅞	8	32	84	1915

## COPING, EDGERS & STEPS SPECIFICATIONS

PRODUCT NAME/ DIMENSIONS	NUMBER OF LAYERS	PIECES/ PALLET	SQFT OR LNFT/ PALLET	WEIGHT/ PALLET (LBS)
<b>ANGLIA EDGER ANTIQUED IS SPECIAL ORDER</b>				
8 x 17⅞ x 4½				
8 x 15½ x 4½				
8 x 10½ x 4½				
8 x 7⅞ x 4½				
Total	3		69.75 LNFT per Cube	2678

<b>COUNTRY MANOR CURB STONE *SOLD AS FULL PALLET ONLY</b>				
4 x 8 x 12	6	120		3540

<b>LANDINGS STEP UNIT</b>				
6 x 48 x 18	2	2		860

<b>MARINA COPING *SOLD BY THE PIECE *TUMBLED ALSO AVAILABLE</b>				
5¹⁵⁄₁₆ x 11¹³⁄₁₆ x 2⅜	4	168		2184



# WALL SPECIFICATIONS

PRODUCT NAME/ UNIT NAME	HEIGHT INCHES	LENGTH INCHES	DEPTH INCHES	UNITS/ PALLET	SQFT OR LNFT/ PALLET	WEIGHT/ PALLET LBS.
<b>ASPEN STONE</b>						
Block	4	11 <sup>5</sup> / <sub>8</sub>	7	120		2760

<b>BELAIR WALL FREESTANDING/RETAINING AND ACCESSORIES</b>						
Retaining Wall Small	6	8	8	60	30	2420
Retaining Wall Large	6	16	8			
Retaining Wall Large with Joint	6	16	8			
Freestanding Wall Small	6	8/6	11	36	18	1800
Freestanding Wall Large	6	16 / 14	11			
Corner / Column	6	16	8	20		1400
Cap end	3	8	13 <sup>1</sup> / <sub>2</sub>	36		882
Wall End	6	8	11	42		1550
Wall Cap	3	8 / 7	13 <sup>1</sup> / <sub>2</sub>	144	90 LNFT	3420

<b>BROOKSHIRE WALL</b>						
3" Freestanding Wall					35	2310
6" Freestanding Wall					35	4655
3" Corner/Column				80		2480
3" Corner/Column				54		3132
6" Corner				40		2600

<b>BROOKSHIRE FIRE PIT KIT</b>						
3 x 13 / 7 x 12	12 per course, 5 courses high for a total of 60 pieces.					

<b>DIAMOND 9D RETAINING WALL SYSTEM AND ACCESSORIES</b>						
Block	6	17 <sup>3</sup> / <sub>4</sub>	9	60	44.4	3360
6" Stone Cut Corner	6	18	8	40		3380
3" Universal Cap	3	17 <sup>1</sup> / <sub>4</sub> / 12 <sup>1</sup> / <sub>4</sub>	10 <sup>3</sup> / <sub>8</sub>	48		2065

<b>DIAMOND PRO PS WALL SYSTEM AND ACCESSORIES</b>						
Block	8	18	12	48	48	3552
Corner	8	18	9	36		4370
4" Universal Cap	4	17 <sup>1</sup> / <sub>4</sub> / 12	10 <sup>3</sup> / <sub>8</sub>	72		4125
Pins		5 x 0.5 dia.		100 per box		



## WALL SPECIFICATIONS (CONT.)

PRODUCT NAME/ UNIT NAME	HEIGHT INCHES	LENGTH INCHES	DEPTH INCHES	UNITS/ PALLET	SQFT OR LNFT/ PALLET	WEIGHT/ PALLET LBS.
<b>DIAMOND PRO PS QUARRIED FACE</b>						
Block	8	18	12	48	48	3552
Corner	8	18	9	40		4370
4" Universal Cap	4	17¼ / 12	10⅜	72		4125
Pins		5 x 0.5 dia.		100 per box		

<b>TANDEM WALL SYSTEM (INCLUDES TWO 8" CONNECTORS PER UNIT)</b>						
Ashlar Tandem or Solid Unit 1	7	13⅝	3	90	70	2032
Ashlar Tandem or Solid Unit 2	7	15⅜	3			
Ashlar Tandem or Solid Unit 3	7	18⅝	3			
Tandem Wall Cap	3¼	24	15	32	64 LNFT	3136
Lafitt Column Cap	3¼	24	24	16		2400
Tandem Column Kit includes 48 Veneers, 2 Steel Cages & 2 Bags of Connectors	42	21½	21½	2 Columns		

<b>U START BASE BLOCK</b>						
Weight per Piece: 47 lbs	18⅞	12	3½	56	73.36 LNFT	3052

<b>WESTON STONE</b>						
Block	4	12	8	120	40	3620

<b>WESTON STONE FIRE PIT KIT - SQUARE</b>						
Metal Insert Sold Separately	4	12	8	48		

<b>WESTON STONE FIRE PIT KIT - CIRCLE</b>						
Metal Insert Sold Separately	3	14 / 8	13	60		







# PEACE OF MIND, GUARANTEED

## LIFETIME TRANSFERABLE LIMITED WARRANTY

Oldcastle® APG, Inc. ("Belgard") is proud to inform you that all of our interlocking concrete paver and retaining walls ("Products") meet and/or exceed the requirements of ASTM C-936 and ASTM C-1372. Belgard® guarantees its Products against these standards for the lifetime of the Product defined by ICPI. This guarantee does not apply to splitting, chipping or other breakage that could be caused by impact, abrasion or overloading. This warranty is transferable. The original proof of purchase is required.

This warranty is only valid if the material is installed under the guidelines of the ICPI ([www.ICPI.org](http://www.ICPI.org)), The NCMA ([www.ncma.org](http://www.ncma.org)) or the Belgard Installation Guideline Manual. Improper installation voids this warranty. This warranty is for residential applications only and does not apply to commercial applications. It is recommended that the job be installed by a Belgard Contractor who provides a guaranty of their workmanship for a minimum of 3 years from the date of install. For warranty service, contact Belgard at 1-877-BELGARD. A service representative will investigate your claim within 10 business days. If the Belgard product fails to meet the specifications, Belgard will replace the defective product at no charge. Color matching cannot be guaranteed. Belgard will not be responsible for any replacement labor, consequential damages or incidental damages. This warranty gives you specific legal rights, and you may also have other rights which vary from state to state. Some states do not allow for the exclusion or limitation of incidental or consequential damages, so the above limitation or exclusion may not apply to you. All other warranties, express or implied are waived.

For specific information regarding warranty coverage and exclusions in regards to the Elements and Porcelain Paver products, please visit: [Belgard.com/Warranty](http://Belgard.com/Warranty)

## STAY CONNECTED



OutdoorLivingbyBelgard



Belgard



BelgardHardscapes



Belgard



BelgardOutdoorLiving



Belgard.com/Blog



**Oldcastle APG**  
A CRH COMPANY

## ANCHOR CENTRAL LOCATIONS

975 Burnt Tavern Road  
Brick, NJ 08724  
Ph: 1-800-682-5625



